

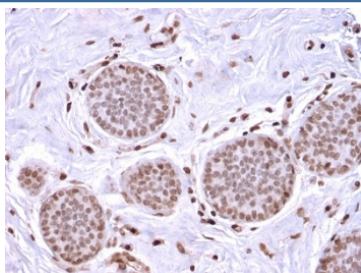
## Recombinant Mammaglobin Antibody / SCGB2A2 [clone MGB/2682R] (V7436)

Catalog No.	Formulation	Size
V7436-100UG	0.2 mg/ml in 1X PBS with 0.1 mg/ml BSA (US sourced) and 0.05% sodium azide	100 ug
V7436-20UG	0.2 mg/ml in 1X PBS with 0.1 mg/ml BSA (US sourced) and 0.05% sodium azide	20 ug
V7436SAF-100UG	1 mg/ml in 1X PBS; BSA free, sodium azide free	100 ug
V7436IHC-7ML	Prediluted in 1X PBS with 0.1 mg/ml BSA (US sourced) and 0.05% sodium azide; *For IHC use only*	7 ml

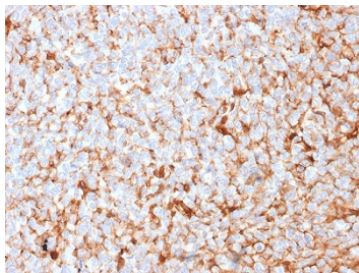
Recombinant **RABBIT MONOCLONAL**

[Bulk quote request](#)

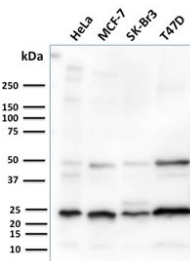
Availability	1-3 business days
Species Reactivity	Human
Format	Purified
Clonality	Recombinant Rabbit Monoclonal
Isotype	Rabbit IgG, kappa
Clone Name	MGB/2682R
Purity	Protein A affinity chromatography
UniProt	Q13296
Localization	Cytoplasmic, cell surface, nuclear
Applications	Western Blot : 1-2ug/ml Immunohistochemistry (FFPE) : 0.1-0.2ug/ml for 30 min at RT Immunofluorescence : 1-2ug/ml
Limitations	This recombinant Mammaglobin antibody is available for research use only.



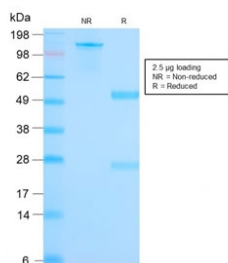
IHC testing of FFPE human breast carcinoma stained with recombinant Mammaglobin antibody (clone MGB/2682R). Required HIER: boiling tissue sections in 10mM citrate buffer, pH6, for 10-20 min followed by cooling at RT for 20 min.



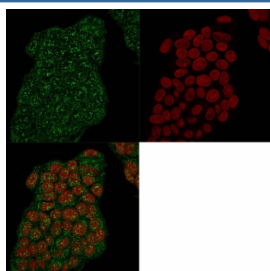
IHC testing of FFPE human breast carcinoma stained with recombinant Mammaglobin antibody (clone MGB/2682R). Required HIER: boiling tissue sections in 10mM citrate buffer, pH6, for 10-20 min followed by cooling at RT for 20 min.



Western blot testing of human HeLa, MCF-7, SK-BR3 and T47D cell lysate with recombinant Mammaglobin antibody (clone MGB/2682R). Expected molecular weight: 10-21 kDa depending on level of glycosylation.



SDS-PAGE analysis of purified, BSA-free recombinant Mammaglobin antibody (clone MGB/2682R) as confirmation of integrity and purity.



Immunofluorescent staining of permeabilized human MCF7 cells with recombinant Mammaglobin antibody (clone MGB/2682R, green) and Reddot nuclear stain (red).

## Description

Mammaglobin, also called Secretoglobin family 2A member 2, or SCGB2A2, is a 93 amino acid glycoprotein with homology to other secretoglobin-uteroglobin family members. It was originally identified as a breast cancer restricted biomarker by differential screening. Mammaglobin related to secretoglobin family that includes human uteroglobin and lipophilin. Mammaglobin antibody stains cytoplasm of normal breast epithelial cells as well as primary and metastatic breast carcinomas. Mammaglobin expression is absent in prostate, kidney, colon, rectum, small intestine, stomach, pancreas, lung, and thyroid tissues. Mammaglobin may be used as part of an immunohistochemical panel for determination of metastatic breast carcinoma and tumor of unknown primary origin.

## Application Notes

Optimal dilution of the recombinant Mammaglobin antibody should be determined by the researcher.

1. The prediluted format is supplied in a dropper bottle and is optimized for use in IHC. After epitope retrieval step (if required), drip mAb solution onto the tissue section and incubate at RT for 30 min.

## Immunogen

Full length recombinant human protein was used as the immunogen for the recombinant Mammaglobin antibody.

## Storage

Store the recombinant Mammaglobin antibody at 2-8oC (with azide) or aliquot and store at -20oC or colder (without azide).