

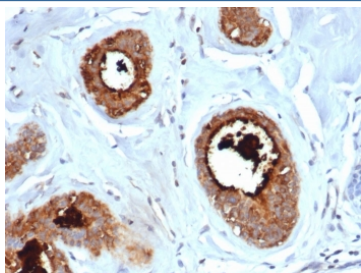
Recombinant Mammaglobin A Antibody / SCGB2A2 [clone rMGB/6619] (V9143)

Catalog No.	Formulation	Size
V9143-100UG	0.2 mg/ml in 1X PBS with 0.1 mg/ml BSA (US sourced), 0.05% sodium azide	100 ug
V9143-20UG	0.2 mg/ml in 1X PBS with 0.1 mg/ml BSA (US sourced), 0.05% sodium azide	20 ug
V9143SAF-100UG	1 mg/ml in 1X PBS; BSA free, sodium azide free	100 ug

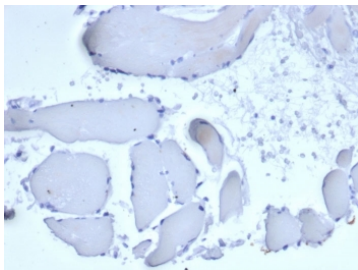
Recombinant MOUSE MONOCLONAL

[Bulk quote request](#)

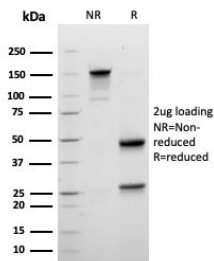
Availability	1-3 business days
Species Reactivity	Human
Format	Purified
Clonality	Recombinant Mouse Monoclonal
Isotype	Mouse IgG1, kappa
Clone Name	rMGB/6619
Purity	Protein A/G affinity
UniProt	Q13296
Localization	Cytoplasm
Applications	Immunohistochemistry (FFPE) : 1-2ug/ml
Limitations	This recombinant Mammaglobin A antibody is available for research use only.



IHC staining of FFPE human lactating breast tissue with recombinant Mammaglobin A antibody (clone rMGB/6619). HIER: boil tissue sections in pH 9 10mM Tris with 1mM EDTA for 20 min and allow to cool before testing.



Negative control: IHC staining of FFPE human skeletal muscle with recombinant Mammaglobin A antibody (rMGB/6619) at 2ug/ml in PBS for 30min RT. HIER: boil tissue sections in pH 9 10mM Tris with 1mM EDTA for 20 min and allow to cool before testing.



SDS-PAGE analysis of purified, BSA-free recombinant Mammaglobin A antibody (clone rMGB/6619) as confirmation of integrity and purity.

Description

Mammaglobin, 10 kDa, is a cytoplasmic protein, a mammary-specific member of the uteroglobin family. It is related to a family of epithelial secretory proteins that includes prostatein and Clara cell protein. Mammaglobin occurs in about 80% of breast carcinomas. The extend is generally larger than that of GCDFP-15. Up to 15% of non-breast carcinomas (such as stomach, lung, colon, hepatobiliary, thyroid, ovarian, and urothelial carcinomas) have been reported positive, usually only focally. Mammaglobin is a sensitive and fairly specific marker for breast carcinoma. The panel should also include Gross cystic disease fluid protein-15 and Estrogen receptor alpha.

Application Notes

Optimal dilution of the recombinant Mammaglobin A antibody should be determined by the researcher.

Immunogen

Recombinant full-length human Mammaglobin/SCGB2A2 protein was used as the immunogen for the recombinant Mammaglobin A antibody.

Storage

Aliquot the recombinant Mammaglobin A antibody and store frozen at -20oC or colder. Avoid repeated freeze-thaw cycles.