

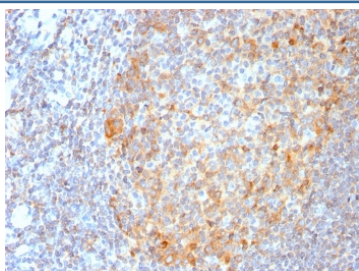
## Recombinant MALT1 Antibody [clone MT1/3159R] (V7670)

Catalog No.	Formulation	Size
V7670-100UG	0.2 mg/ml in 1X PBS with 0.1 mg/ml BSA (US sourced) and 0.05% sodium azide	100 ug
V7670-20UG	0.2 mg/ml in 1X PBS with 0.1 mg/ml BSA (US sourced) and 0.05% sodium azide	20 ug
V7670SAF-100UG	1 mg/ml in 1X PBS; BSA free, sodium azide free	100 ug

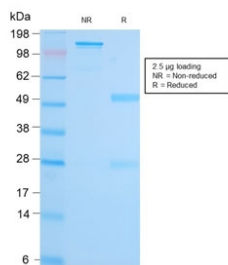
Recombinant **RABBIT MONOCLONAL**

[Bulk quote request](#)

<b>Availability</b>	1-3 business days
<b>Species Reactivity</b>	Human
<b>Format</b>	Purified
<b>Clonality</b>	Recombinant Rabbit Monoclonal
<b>Isotype</b>	Rabbit IgG, kappa
<b>Clone Name</b>	MT1/3159R
<b>Purity</b>	Protein A affinity chromatography
<b>UniProt</b>	Q9UDY8
<b>Localization</b>	Cytoplasmic
<b>Applications</b>	Immunohistochemistry (FFPE) : 1-2ug/ml
<b>Limitations</b>	This recombinant MALT1 antibody is available for research use only.



IHC staining of FFPE human tonsil tissue with recombinant MALT1 antibody (clone MT1/3159R). Required HIER: boil tissue sections in pH 9 10mM Tris with 1mM EDTA for 10-20 min.



SDS-PAGE analysis of purified, BSA-free recombinant MALT1 antibody (clone MT1/3159R) as confirmation of integrity and purity.

## Description

Mucosa associated lymphoid tissue lymphoma translocation gene 1 (MALT1) is found in extranodal low-grade B cell lymphomas. MALT1 encodes two Ig-like C2-type domains and fuses with an API2 gene, which is highly expressed in adult lymphoid tissue. The translocation of this MALT1 gene, which maps to human chromosome 18q21, and the apoptosis-inhibiting API2 gene results in an increased development of MALT lymphomas and apoptosis inhibition. Sites at which this API2-MALT1 (11;18)(q21;q21) translocation commonly occurs are within human lung and kidney tissue. MALT lymphoma expresses nuclear Bcl10, which mediates the oligomerization and activation of a MALT1 caspase-like domain. MALT1 mRNA is found in pre-B cells, mature B cells and plasma cells.

## Application Notes

Optimal dilution of the recombinant MALT1 antibody should be determined by the researcher.

## Immunogen

A recombinant protein fragment (amino acids 701-808) was used as the immunogen for this antibody.

## Storage

Store the recombinant MALT1 antibody at 2-8°C (with azide) or aliquot and store at -20°C or colder (without azide).