

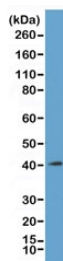
Recombinant MacroH2A.1 Antibody / H2AFY [clone RM248] (R20247)

Catalog No.	Formulation	Size
R20247-100UG	1 mg/ml in PBS with 50% glycerol, 1% BSA and 0.09% sodium azide	100 ug
R20247-25UG	1 mg/ml in PBS with 50% glycerol, 1% BSA and 0.09% sodium azide	25 ug

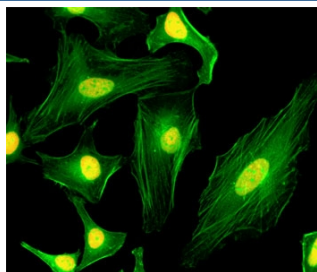
Recombinant **RABBIT MONOCLONAL**

[Bulk quote request](#)

Availability	1-3 business days
Species Reactivity	Human
Format	Purified
Clonality	Recombinant Rabbit Monoclonal
Isotype	Rabbit IgG
Clone Name	RM248
Purity	Protein A purified from animal origin-free supernatant
UniProt	Q9QZQ8
Gene ID	9555
Applications	Western Blot : 0.5-2ug/ml Immunocytochemistry : 1-2ug/ml ELISA : 0.2-1ug/ml
Limitations	This recombinant MacroH2A.1 antibody is available for research use only.



Western blot of acid extracts from K562 cells, using recombinant MacroH2A.1 antibody at 1 ug/ml. Predicted molecular weight ~40 kDa.



ICC/IF of HeLa cells using recombinant MacroH2A.1 antibody (red). Actin filaments have been labeled with fluorescein phalloidin (green).

Description

This recombinant MacroH2A.1 antibody reacts to the Core histone macro-H2A.1 (Histone macroH2A1) protein, independent of post-translational modifications. No cross reactivity with other histone proteins.

Application Notes

The stated application concentrations are suggested starting points. Titration of the recombinant MacroH2A.1 antibody may be required due to differences in protocols and secondary/substrate sensitivity.

Immunogen

A peptide corresponding to the C-terminus of human Histone macroH2A1 was used as the immunogen for this recombinant MacroH2A.1 antibody.

Storage

Store the recombinant MacroH2A.1 antibody at -20oC (with glycerol) or aliquot and store at -20oC (without glycerol).