

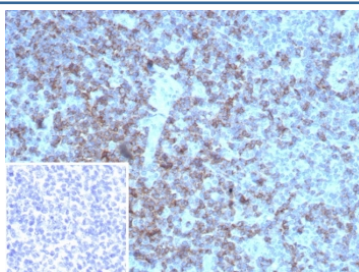
Recombinant LFA-2 Antibody / CD2 [clone rLFA2/8516] (V4656)

Catalog No.	Formulation	Size
V4656-100UG	0.2 mg/ml in 1X PBS with 0.1 mg/ml BSA (US sourced), 0.05% sodium azide	100 ug
V4656-20UG	0.2 mg/ml in 1X PBS with 0.1 mg/ml BSA (US sourced), 0.05% sodium azide	20 ug
V4656SAF-100UG	1 mg/ml in 1X PBS; BSA free, sodium azide free	100 ug

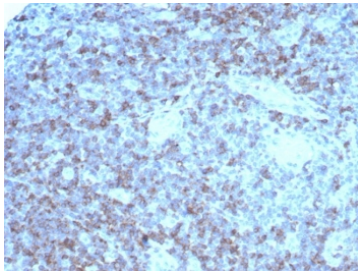
Recombinant **MOUSE MONOCLONAL**

[Bulk quote request](#)

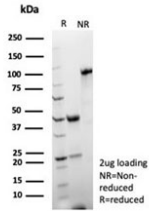
Availability	1-3 business days
Species Reactivity	Human
Format	Purified
Clonality	Recombinant Mouse Monoclonal
Isotype	Mouse IgG1, kappa
Clone Name	rLFA2/8516
Purity	Protein A/G affinity
UniProt	P06729
Localization	Cell surface
Applications	Immunohistochemistry (FFPE) : 1-2ug/ml for 30 min at RT
Limitations	This recombinant LFA-2 antibody is available for research use only.



IHC staining of FFPE human tonsil tissue with recombinant LFA-2 antibody (clone rLFA2/8516) Inset: PBS used in place of primary Ab (secondary Ab negative control).
HIER: boil tissue sections in pH 9 10mM Tris with 1mM EDTA for 20 min and allow to cool before testing.



IHC staining of FFPE human tonsil tissue with recombinant LFA-2 antibody (clone rLFA2/8516) HIER: boil tissue sections in pH 9 10mM Tris with 1mM EDTA for 20 min and allow to cool before testing.



SDS-PAGE analysis of purified, BSA-free recombinant LFA-2 antibody (clone rLFA2/8516) as confirmation of integrity and purity.

Description

CD2 is mainly present on the surface of mature T cells and NK cell membranes, while B cells are usually not expressed. It can be used to label the diagnosis and study of normal T cells and their associated tumors, such as pre-t cell lymphoma, marginal T cell lymphoma and anaplastic cell lymphoma. CD2 antibody is useful for identification of precursor and mature T-cell lymphomas. Aberrant loss of CD2 in T-cell lymphomas may help to distinguish them from reactive T-cell proliferations.

Application Notes

Optimal dilution of the recombinant LFA-2 antibody should be determined by the researcher.

Immunogen

A recombinant fragment of the human protein was used as the immunogen for the recombinant LFA-2 antibody.

Storage

Aliquot the recombinant LFA-2 antibody and store frozen at -20oC or colder. Avoid repeated freeze-thaw cycles.