

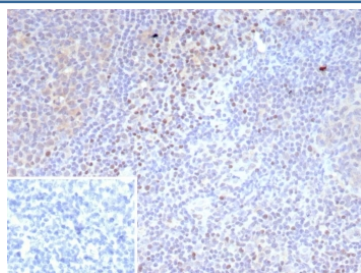
Recombinant LEF1 Antibody / Lymphoid enhancer-binding factor 1 / TCF1 alpha [clone LEF1/9403R] (V5624)

Catalog No.	Formulation	Size
V5624-100UG	0.2 mg/ml in 1X PBS with 0.1 mg/ml BSA (US sourced), 0.05% sodium azide	100 ug
V5624-20UG	0.2 mg/ml in 1X PBS with 0.1 mg/ml BSA (US sourced), 0.05% sodium azide	20 ug
V5624SAF-100UG	1 mg/ml in 1X PBS; BSA free, sodium azide free	100 ug

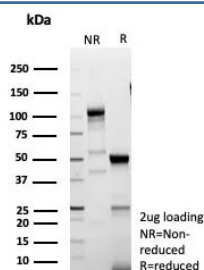
Recombinant **RABBIT MONOCLONAL**

[Bulk quote request](#)

Availability	1-3 business days
Species Reactivity	Human
Format	Purified
Clonality	Recombinant Rabbit Monoclonal
Isotype	Rabbit IgG, kappa
Clone Name	LEF1/9403R
Purity	Protein A/G affinity
UniProt	Q9UJU2
Localization	Nucleus
Applications	Immunohistochemistry (FFPE) : 1-2ug/ml
Limitations	This recombinant LEF1 antibody is available for research use only.



IHC staining of FFPE human tonsil tissue with recombinant LEF1 antibody (clone LEF1/9403R). Strong nuclear staining of non-germinal center of cells observed. Inset: PBS used in place of primary Ab (secondary Ab negative control). HIER: boil tissue sections in pH 9 10mM Tris with 1mM EDTA for 20 min and allow to cool before testing.



SDS-PAGE analysis of purified, BSA-free recombinant recombinant LEF1 antibody (clone LEF1/9403R) as confirmation of integrity and purity.

Description

Lymphoid enhancer-binding factor 1 (LEF1) is a transcription factor that belongs to the TCF/LEF family. LEF1 participates as a regulator in Wnt signaling pathways. LEF1 is an important factor in lymphopoiesis and is expressed normally in T and pro-B cells but not expressed in mature B cells. Anti-LEF1 may be used as an aid for differentiation of chronic lymphocytic leukemia/small lymphocytic lymphoma from other small B cell lymphomas.

Application Notes

Optimal dilution of the recombinant LEF1 antibody should be determined by the researcher.

Immunogen

A recombinant fragment (within amino acids 1-200) of human LEF1 protein was used as the immunogen for the recombinant LEF1 antibody.

Storage

Aliquot the recombinant LEF1 antibody and store frozen at -20oC or colder. Avoid repeated freeze-thaw cycles.