

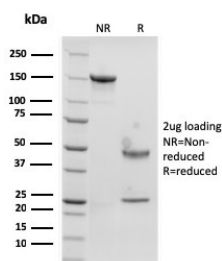
Recombinant Langerin Antibody / CD207 [clone rLGRN/1821] (V8856)

Catalog No.	Formulation	Size
V8856-100UG	0.2 mg/ml in 1X PBS with 0.1 mg/ml BSA (US sourced), 0.05% sodium azide	100 ug
V8856-20UG	0.2 mg/ml in 1X PBS with 0.1 mg/ml BSA (US sourced), 0.05% sodium azide	20 ug
V8856SAF-100UG	1 mg/ml in 1X PBS; BSA free, sodium azide free	100 ug

Recombinant **MOUSE MONOCLONAL**

[Bulk quote request](#)

Availability	1-3 business days
Species Reactivity	Human
Format	Purified
Clonality	Recombinant Mouse Monoclonal
Isotype	Mouse IgG1, kappa
Clone Name	rLGRN/1821
Purity	Protein A/G affinity
UniProt	Q9UJ71
Localization	Cell surface and cytoplasmic
Applications	ELISA : 2-4ug/ml (order BSA-free format for coating)
Limitations	This recombinant Langerin antibody is available for research use only.



SDS-PAGE analysis of purified, BSA-free recombinant Langerin antibody (clone rLGRN/1821) as confirmation of integrity and purity.

Description

Langerhans cells (LCs) are a subset of immature dendritic cells (DCs) that specifically localize in the epidermis and other mucosal epithelia. Epidermal LCs possess strong immuno-stimulatory capacity and play a central role in the initiation and regulation of immune responses. Langerin (CD207) is a Ca^{2+} -dependent, C-type lectin domain containing, type II transmembrane protein that induces epidermal LCs to differentiate into Birbeck granules (BG). BGs are organelles with

superimposing and zippering membranes that influence proper class I type antigen presentation to the circulating T cells. Human spleen, lymph node, thymus, liver, lung and heart express Langerin protein.

Application Notes

Optimal dilution of the recombinant Langerin antibody should be determined by the researcher.

Immunogen

A portion of amino acids 74-213 was used as the immunogen for the recombinant Langerin antibody.

Storage

Aliquot the recombinant Langerin antibody and store frozen at -20oC or colder. Avoid repeated freeze-thaw cycles.