

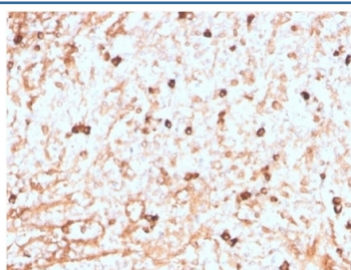
Recombinant Lambda Light Chain Antibody [clone LLC/3774R] (V8873)

Catalog No.	Formulation	Size
V8873-100UG	0.2 mg/ml in 1X PBS with 0.1 mg/ml BSA (US sourced), 0.05% sodium azide	100 ug
V8873-20UG	0.2 mg/ml in 1X PBS with 0.1 mg/ml BSA (US sourced), 0.05% sodium azide	20 ug
V8873SAF-100UG	1 mg/ml in 1X PBS; BSA free, sodium azide free	100 ug

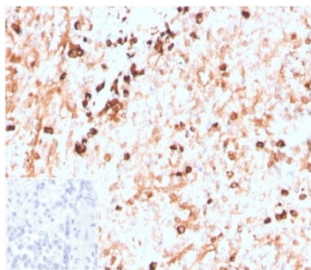
Recombinant **RABBIT MONOCLONAL**

[Bulk quote request](#)

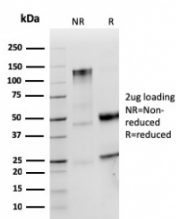
Availability	1-3 business days
Species Reactivity	Human
Format	Purified
Clonality	Recombinant Rabbit Monoclonal
Isotype	Rabbit IgG
Clone Name	LLC/3774R
Purity	Protein A/G affinity
UniProt	P01701 & P01842
Localization	Cell Surface, cytoplasmic and secreted
Applications	Immunohistochemistry (FFPE) : 1-2ug/ml
Limitations	This recombinant Lambda Light Chain antibody is available for research use only.



IHC staining of FFPE human spleen tissue with recombinant Lambda Light Chain antibody (clone LLC/3774R). HIER: boil tissue sections in pH 9 10mM Tris with 1mM EDTA for 20 min and allow to cool before testing.



IHC staining of FFPE human spleen tissue with recombinant Lambda Light Chain (clone LLC/3774R). Negative control inset: PBS instead of primary antibody to control for secondary binding. HIER: boil tissue sections in pH 9 10mM Tris with 1mM EDTA for 20 min and allow to cool before testing.



SDS-PAGE analysis of purified, BSA-free recombinant Lambda Light Chain antibody (clone LLC/3774R) as confirmation of integrity and purity.

Description

This MAb is specific to lambda light chain of immunoglobulin and shows no cross-reaction with lambda light chain or any of the five heavy chains. In mammals, the two light chains in an antibody are always identical, with only one type of light chain, kappa or lambda. The ratio of Kappa to Lambda is 70:30. However, with the occurrence of multiple myeloma or other B-cell malignancies this ratio is disturbed. Antibody to the lambda light chain is reportedly useful in the identification of leukemias, plasmacytomas, and certain non-Hodgkins lymphomas. Demonstration of clonality in lymphoid infiltrates indicates that the infiltrate is malignant.

Application Notes

Optimal dilution of the recombinant Lambda Light Chain antibody should be determined by the researcher.

Immunogen

Recombinant full-length human IGL protein was used as the immunogen for the recombinant Lambda Light Chain antibody.

Storage

Aliquot the recombinant Lambda Light Chain antibody and store frozen at -20oC or colder. Avoid repeated freeze-thaw cycles.