

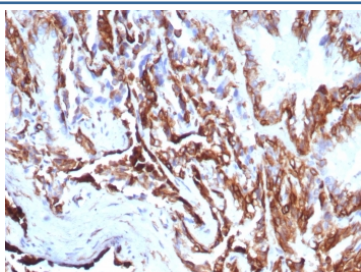
## Recombinant KRT7 Antibody / Cytokeratin 7 [clone rKRT7/8763] (V4281)

Catalog No.	Formulation	Size
V4281-100UG	0.2 mg/ml in 1X PBS with 0.1 mg/ml BSA (US sourced), 0.05% sodium azide	100 ug
V4281-20UG	0.2 mg/ml in 1X PBS with 0.1 mg/ml BSA (US sourced), 0.05% sodium azide	20 ug
V4281SAF-100UG	1 mg/ml in 1X PBS; BSA free, sodium azide free	100 ug

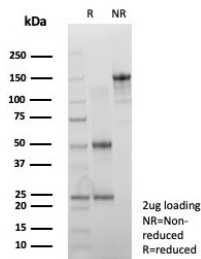
Recombinant **MOUSE MONOCLONAL**

[Bulk quote request](#)

<b>Availability</b>	1-3 business days
<b>Species Reactivity</b>	Human
<b>Format</b>	Purified
<b>Clonality</b>	Recombinant Mouse Monoclonal
<b>Isotype</b>	Mouse IgG2b, kappa
<b>Clone Name</b>	rKRT7/8763
<b>Purity</b>	Protein A/G affinity
<b>UniProt</b>	P08729
<b>Localization</b>	Cytoplasm
<b>Applications</b>	Immunohistochemistry (FFPE) : 1-2ug/ml for 30 minutes at RT
<b>Limitations</b>	This recombinant KRT7 antibody is available for research use only.



IHC staining of FFPE human prostate carcinoma tissue with recombinant KRT7 antibody (clone rKRT7/8763). HIER: boil tissue sections in pH 9 10mM Tris with 1mM EDTA for 20 min and allow to cool before testing.



SDS-PAGE analysis of purified, BSA-free recombinant KRT7 antibody (clone rKRT7/8763) as confirmation of integrity and purity.

## Description

It recognizes an intermediate filament protein (IFP) of 55kDa, which is identified as cytokeratin 7. This mAb is highly specific to cytokeratin 7 and shows no cross-reaction with other IFPs. Cytokeratin 7 is a basic cytokeratin, which is found in most glandular and transitional epithelia but not in the stratified squamous epithelia. Keratin 7 is expressed in the epithelial cells of ovary, lung, and breast but not of colon, prostate, or gastrointestinal tract. This mAb is highly useful in distinguishing ovarian carcinomas (keratin 7+) from colon carcinomas (keratin 7-).

## Application Notes

Optimal dilution of the recombinant KRT7 antibody should be determined by the researcher.

## Immunogen

Recombinant full-length human KRT7 protein was used as the immunogen for the recombinant KRT7 antibody.

## Storage

Aliquot the recombinant KRT7 antibody and store frozen at -20oC or colder. Avoid repeated freeze-thaw cycles.