

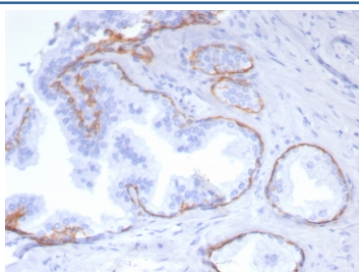
## Recombinant KRT5 Antibody / Cytokeratin 5 [clone rKRT5/6969] (V4279)

Catalog No.	Formulation	Size
V4279-100UG	0.2 mg/ml in 1X PBS with 0.1 mg/ml BSA (US sourced), 0.05% sodium azide	100 ug
V4279-20UG	0.2 mg/ml in 1X PBS with 0.1 mg/ml BSA (US sourced), 0.05% sodium azide	20 ug
V4279SAF-100UG	1 mg/ml in 1X PBS; BSA free, sodium azide free	100 ug

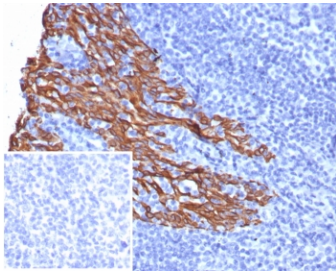
Recombinant **MOUSE MONOCLONAL**

[Bulk quote request](#)

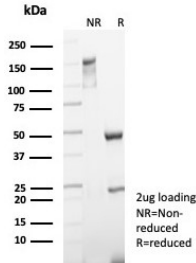
<b>Availability</b>	1-3 business days
<b>Species Reactivity</b>	Human
<b>Format</b>	Purified
<b>Clonality</b>	Recombinant Mouse Monoclonal
<b>Isotype</b>	Mouse IgG2a, kappa
<b>Clone Name</b>	rKRT5/6969
<b>Purity</b>	Protein A/G affinity
<b>UniProt</b>	P13647
<b>Localization</b>	Cytoplasm
<b>Applications</b>	Immunohistochemistry (FFPE) : 1-2ug/ml for 30 minutes at RT
<b>Limitations</b>	This recombinant KRT5 antibody is available for research use only.



IHC staining of FFPE human prostate tissue with recombinant KRT5 antibody (clone rKRT5/6969). HIER: boil tissue sections in pH 9 10mM Tris with 1mM EDTA for 20 min and allow to cool before testing.



IHC staining of FFPE human tonsil tissue with recombinant KRT5 antibody (clone rKRT5/6969). Inset: PBS used in place of primary Ab (secondary Ab negative control).  
HIER: boil tissue sections in pH 9 10mM Tris with 1mM EDTA for 20 min and allow to cool before testing.



SDS-PAGE analysis of purified, BSA-free recombinant KRT5 antibody (clone rKRT5/6969) as confirmation of integrity and purity.

## Description

This mAb recognizes a protein of 58kDa, which is identified as Cytokeratin 5 (KRT5). This type II cytokeratin is specifically expressed in the basal layer of the epidermis with family member KRT14. Antibodies to KRT5 identify basal cells of squamous and glandular epithelia, yoepithelial, and mesothelium. Anti-cytokeratin 5 has been reported useful in the differential diagnosis of metastatic carcinoma in the pleura versus epithelioid mesothelioma. Almost all squamous cell carcinomas, half of transitional carcinomas, and many undifferentiated large cell carcinomas express. Anti-KRT5, along with anti-p63, affords a high sensitivity and specificity for squamous differentiation. Myoepithelial cells of the breast, glandular epithelia, and basal cells of the prostate are labeled with anti-KRT5.

## Application Notes

Optimal dilution of the recombinant KRT5 antibody should be determined by the researcher.

## Immunogen

A recombinant partial protein sequence (within amino acids 390-590) from the human protein was used as the immunogen for the recombinant KRT5 antibody.

## Storage

Aliquot the recombinant KRT5 antibody and store frozen at -20oC or colder. Avoid repeated freeze-thaw cycles.