

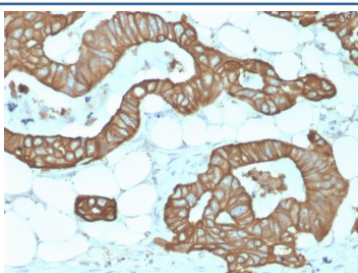
Recombinant KRT19 Antibody / Rabbit Monoclonal [clone KRT19/1959R] (V3618)

Catalog No.	Formulation	Size
V3618-100UG	0.2 mg/ml in 1X PBS with 0.1 mg/ml BSA (US sourced) and 0.05% sodium azide	100 ug
V3618-20UG	0.2 mg/ml in 1X PBS with 0.1 mg/ml BSA (US sourced) and 0.05% sodium azide	20 ug
V3618SAF-100UG	1 mg/ml in 1X PBS; BSA free, sodium azide free	100 ug
V3618IHC-7ML	Prediluted in 1X PBS with 0.1 mg/ml BSA (US sourced) and 0.05% sodium azide; *For IHC use only*	7 ml

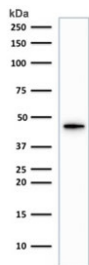
Recombinant RABBIT MONOCLONAL

[Bulk quote request](#)

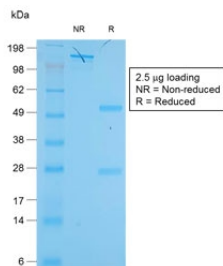
Availability	1-3 business days
Species Reactivity	Human
Format	Purified
Clonality	Recombinant Rabbit Monoclonal
Isotype	Rabbit IgG, kappa
Clone Name	KRT19/1959R
Purity	Protein A affinity chromatography
UniProt	P08727
Localization	Cytoplasmic, cell membrane, secreted
Applications	Western Blot : 1-2ug/ml Immunohistochemistry (FFPE) : 1-2ug/ml for 30 min at RT
Limitations	This recombinant KRT19 antibody is available for research use only.



IHC testing of FFPE human colon tissue with recombinant KRT19 antibody (clone KRT19/1959R). Required HIER: boil tissue sections in pH 9 10mM Tris with 1mM EDTA for 10-20 min followed by cooling at RT for 20 min.



Western blot testing of human HepG2 antibody with recombinant KRT19 antibody (clone KRT19/1959R). Predicted molecular weight ~43 kDa.



SDS-PAGE analysis of purified, BSA-free recombinant KRT19 antibody (clone KRT19/1959R) as confirmation of integrity and purity.

Description

Recognizes a protein of 40kDa, identified as cytokeratin-19 (CK19), which is expressed in sweat gland, mammary gland ductal and secretory cells, bile ducts, gastrointestinal tract, bladder urothelium, oral epithelia, esophagus, and ectocervical epithelium. Anti-CK19 reacts with a wide variety of epithelial malignancies including adenocarcinomas of the colon, stomach, pancreas, biliary tract, liver, and breast. Perhaps the most useful application is the identification of thyroid carcinoma of the papillary type, although 50%-60% of follicular carcinomas are also labeled. Anti-CK19 is a useful marker for detection of tumor cells in lymph nodes, peripheral blood, bone marrow and breast cancer.

Application Notes

Optimal dilution of the recombinant KRT19 antibody should be determined by the researcher.

1. The prediluted format is supplied in a dropper bottle and is optimized for use in IHC. After epitope retrieval step (if required), drip mAb solution onto the tissue section and incubate at RT for 30 min.

Immunogen

Human mammary epithelial organoids were used as the immunogen for the recombinant KRT19 antibody.

Storage

Store the recombinant KRT19 antibody at 2-8°C (with azide) or aliquot and store at -20°C or colder (without azide).