

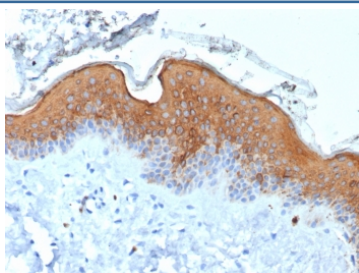
Recombinant KRT10 Antibody / Cytokeratin 10 / CK10 [clone rKRT10/6923] (V4482)

Catalog No.	Formulation	Size
V4482-100UG	0.2 mg/ml in 1X PBS with 0.1 mg/ml BSA (US sourced), 0.05% sodium azide	100 ug
V4482-20UG	0.2 mg/ml in 1X PBS with 0.1 mg/ml BSA (US sourced), 0.05% sodium azide	20 ug
V4482SAF-100UG	1 mg/ml in 1X PBS; BSA free, sodium azide free	100 ug

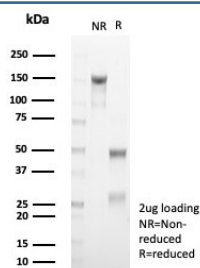
Recombinant MOUSE MONOCLONAL

[Bulk quote request](#)

Availability	1-3 business days
Species Reactivity	Human
Format	Purified
Clonality	Recombinant Mouse Monoclonal
Isotype	Mouse IgG1, kappa
Clone Name	rKRT10/6923
Purity	Protein A/G affinity
UniProt	P13645
Localization	Cytoplasm
Applications	Immunohistochemistry (FFPE) : 1-2ug/ml for 30 minutes at RT
Limitations	This recombinant KRT10 antibody is available for research use only.



IHC staining of FFPE human skin tissue with recombinant KRT10 antibody (clone rKRT10/6923). HIER: boil tissue sections in pH 9 10mM Tris with 1mM EDTA for 20 min and allow to cool before testing.



SDS-PAGE analysis of purified, BSA-free recombinant KRT10 antibody (clone rKRT10/6923) as confirmation of integrity and purity.

Description

This mAb recognizes a protein of 56.5kDa, identified as cytokeratin 10 (CK10). CK10 is expressed in all suprabasal layers of the epidermis. In the epidermis, expression of CK10 strictly parallels the extent of differentiation; it is absent in the basal layer, appears in the first suprabasal layers and increases in concentration towards the granular layer. However, CK10 is rarely detected in early stages of vulvar squamous carcinomas (tumors less than 2 cm, clinical stage I) regardless of the tumor grade. In larger and more advanced tumors (greater than 2 cm, clinical stages II and III), CK10 is detected very frequently. Expression of CK10 is related to maturation of malignant keratinocytes, being preferentially detected in more differentiated parts.

Application Notes

Optimal dilution of the recombinant KRT10 antibody should be determined by the researcher.

Immunogen

A recombinant partial protein sequence (within amino acids 384-584) from the human protein was used as the immunogen for the recombinant KRT10 antibody.

Storage

Aliquot the recombinant KRT10 antibody and store frozen at -20oC or colder. Avoid repeated freeze-thaw cycles.