

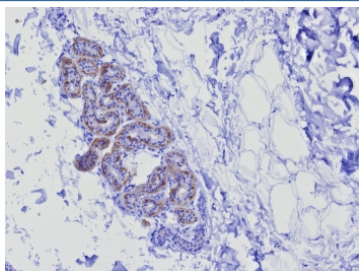
## Recombinant Keratin 17 Antibody / Cytokeratin 17 [clone KRT17/8346R] (V4494)

Catalog No.	Formulation	Size
V4494-100UG	0.2 mg/ml in 1X PBS with 0.1 mg/ml BSA (US sourced), 0.05% sodium azide	100 ug
V4494-20UG	0.2 mg/ml in 1X PBS with 0.1 mg/ml BSA (US sourced), 0.05% sodium azide	20 ug
V4494SAF-100UG	1 mg/ml in 1X PBS; BSA free, sodium azide free	100 ug

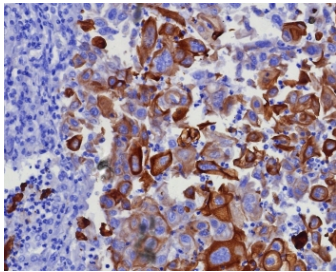
Recombinant **RABBIT MONOCLONAL**

[Bulk quote request](#)

Availability	1-3 business days
Species Reactivity	Human
Format	Purified
Clonality	Recombinant Rabbit Monoclonal
Isotype	Rabbit IgG, kappa
Clone Name	KRT17/8346R
Purity	Protein A/G affinity
UniProt	Q04695
Localization	Cytoplasm
Applications	Immunohistochemistry (FFPE) : 1-2ug/ml for 30 minutes at RT
Limitations	This recombinant Keratin 17 antibody is available for research use only.



IHC staining of FFPE human skin tissue with recombinant Keratin 17 antibody (clone KRT17/8346R). HIER: boil tissue sections in pH 9 10mM Tris with 1mM EDTA for 20 min and allow to cool before testing.



IHC staining of FFPE human lung adenocarcinoma tissue with recombinant Keratin 17 antibody (clone KRT17/8346R). HIER: boil tissue sections in pH 9 10mM Tris with 1mM EDTA for 20 min and allow to cool before testing.

## Description

Cytokeratin 17 is normally expressed in the basal cells of complex epithelia but not in stratified or simple epithelia. Antibody to CK17 is an excellent tool to distinguish myoepithelial cells from luminal epithelium of various glands such as mammary, sweat and salivary. It is expressed in epithelial cells of various origins, such as bronchial epithelial cells and skin appendages. It may be considered as epithelial stem cell marker because CK17 Ab marks basal cell differentiation. CK17 is expressed in SCLC much higher than in LADC. Eighty-five percent of the triple negative breast carcinomas immunoreact with basal cytokeratins including anti-CK17. Also important is that cases of triple negative breast carcinoma with expression of CK17 show an aggressive clinical course.

## Application Notes

Optimal dilution of the recombinant Keratin 17 antibody should be determined by the researcher.

## Immunogen

A recombinant fragment of human KRT17 protein was used as the immunogen for the recombinant Keratin 17 antibody.

## Storage

Aliquot the recombinant Keratin 17 antibody and store frozen at -20oC or colder. Avoid repeated freeze-thaw cycles.