

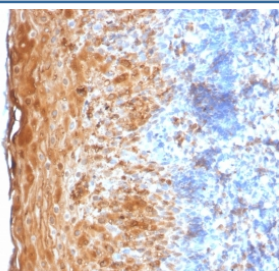
Recombinant Involucrin Antibody [clone IVRN/2113R] (V3593)

Catalog No.	Formulation	Size
V3593-100UG	0.2 mg/ml in 1X PBS with 0.1 mg/ml BSA (US sourced) and 0.05% sodium azide	100 ug
V3593-20UG	0.2 mg/ml in 1X PBS with 0.1 mg/ml BSA (US sourced) and 0.05% sodium azide	20 ug
V3593SAF-100UG	1 mg/ml in 1X PBS; BSA free, sodium azide free	100 ug
V3593IHC-7ML	Prediluted in 1X PBS with 0.1 mg/ml BSA (US sourced) and 0.05% sodium azide; *For IHC use only*	7 ml

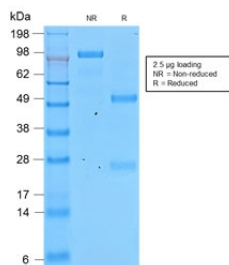
Recombinant **RABBIT MONOCLONAL**

[Bulk quote request](#)

Availability	1-3 business days
Species Reactivity	Human
Format	Purified
Clonality	Recombinant Rabbit Monoclonal
Isotype	Rabbit IgG, kappa
Clone Name	IVRN/2113R
Purity	Protein A affinity chromatography
UniProt	P07476
Localization	Cytoplasmic
Applications	Immunohistochemistry (FFPE) : 1-2ug/ml for 30 min at RT
Limitations	This recombinant Involucrin antibody is available for research use only.



IHC testing of FFPE human tonsil with recombinant Involucrin antibody (clone IVRN/2113R). Staining of formalin-fixed tissues is enhanced by digestion with Trypsin or Protease XXV at 1mg/ml PBS for 5 min at 37°C. Enzyme digestion is more effective than Citrate buffer based epitope unmasking.



SDS-PAGE analysis of purified, BSA-free recombinant Involucrin antibody (clone IVRN/2113R) as confirmation of integrity and purity.

Description

Involucrin is a highly reactive, soluble, transglutaminase substrate protein present in keratinocytes of epidermis and other stratified squamous epithelia. It first appears in the cell cytosol, but ultimately becomes cross-linked to membrane proteins by transglutaminase thus helping in the formation of an insoluble envelope beneath the plasma membrane functioning as a glutamyl donor during assembly of the cornified envelope. [Wiki]

Application Notes

Titration of the recombinant Involucrin antibody may be required for optimal performance.

1. The prediluted format is supplied in a dropper bottle and is optimized for use in IHC. After epitope retrieval step (if required), drip mAb solution onto the tissue section and incubate at RT for 30 min.

Immunogen

Involucrin purified from human keratinocytes was used as the immunogen for the recombinant Involucrin antibody.

Storage

Store the recombinant Involucrin antibody at 2-8°C (with azide) or aliquot and store at -20°C or colder (without azide).