

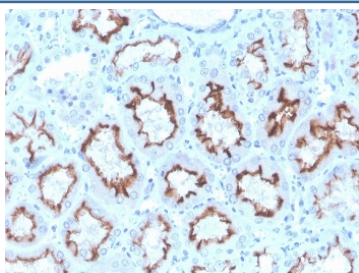
## Recombinant Interferon gamma Antibody [clone rIFNG/4467] (V8487)

Catalog No.	Formulation	Size
V8487-100UG	0.2 mg/ml in 1X PBS with 0.1 mg/ml BSA (US sourced) and 0.05% sodium azide	100 ug
V8487-20UG	0.2 mg/ml in 1X PBS with 0.1 mg/ml BSA (US sourced) and 0.05% sodium azide	20 ug
V8487SAF-100UG	1 mg/ml in 1X PBS; BSA free, sodium azide free	100 ug

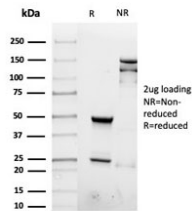
### Recombinant MOUSE MONOCLONAL

[Bulk quote request](#)

<b>Availability</b>	1-3 business days
<b>Species Reactivity</b>	Human
<b>Format</b>	Purified
<b>Clonality</b>	Recombinant Mouse Monoclonal
<b>Isotype</b>	Mouse IgG2a, kappa
<b>Clone Name</b>	rIFNG/4467
<b>Purity</b>	Protein G affinity chromatography
<b>UniProt</b>	P01579
<b>Localization</b>	Cytoplasmic & Cell surface
<b>Applications</b>	Immunohistochemistry (FFPE) : 1-2ug/ml for 30 minutes at RT
<b>Limitations</b>	This recombinant Interferon gamma antibody is available for research use only.



IHC staining of FFPE human kidney with recombinant Interferon gamma antibody. HIER: boil tissue sections in pH 9 10mM Tris with 1mM EDTA for 20 min and allow to cool before testing.



SDS-PAGE analysis of purified, BSA-free recombinant Interferon gamma antibody as confirmation of integrity and purity.

## Description

Recognizes a protein of 20-25kDa, identified as human interferon. This MAb is specific to human IFN $\gamma$ , and recognizes both recombinant and native human IFN gamma.

## Application Notes

Optimal dilution of the recombinant Interferon gamma antibody should be determined by the researcher.

## Immunogen

Purified recombinant human full-length protein was used as the immunogen for the recombinant Interferon gamma antibody.

## Storage

Store the recombinant Interferon gamma antibody at 2-8oC (with azide) or aliquot and store at -20oC or colder (without azide).