

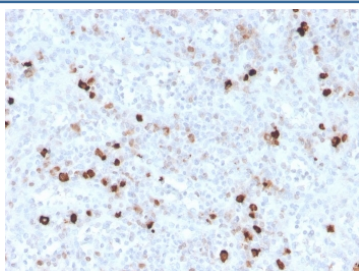
## Recombinant IgM Antibody [clone IGHM/3776R] (V8051)

Catalog No.	Formulation	Size
V8051-100UG	0.2 mg/ml in 1X PBS with 0.1 mg/ml BSA (US sourced) and 0.05% sodium azide	100 ug
V8051-20UG	0.2 mg/ml in 1X PBS with 0.1 mg/ml BSA (US sourced) and 0.05% sodium azide	20 ug
V8051SAF-100UG	1 mg/ml in 1X PBS; BSA free, sodium azide free	100 ug

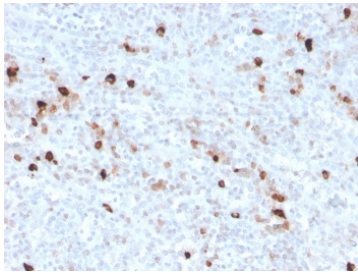
Recombinant **RABBIT MONOCLONAL**

[Bulk quote request](#)

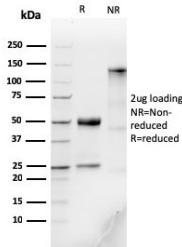
<b>Availability</b>	1-3 business days
<b>Species Reactivity</b>	Human
<b>Format</b>	Purified
<b>Clonality</b>	Recombinant Rabbit Monoclonal
<b>Isotype</b>	Rabbit IgG, kappa
<b>Clone Name</b>	IGHM/3776R
<b>Purity</b>	Protein A affinity chromatography
<b>UniProt</b>	P01871
<b>Localization</b>	Cytoplasmic, cell surface, secreted
<b>Applications</b>	Immunohistochemistry (FFPE) : 1-2ug/ml
<b>Limitations</b>	This recombinant IgM antibody is available for research use only.



IHC staining of FFPE human spleen with recombinant IgM antibody (clone IGHM/3776R). HIER: boil tissue sections in pH 9 10mM Tris with 1mM EDTA for 10-20 min and allow to cool before testing.



IHC staining of FFPE human spleen with recombinant IgM antibody (clone IGHM/3776R). HIER: boil tissue sections in pH 9 10mM Tris with 1mM EDTA for 10-20 min and allow to cool before testing.



SDS-PAGE analysis of purified, BSA-free recombinant IgM antibody (clone IGHM/3776R) as confirmation of integrity and purity.

## Description

Recognizes a protein of 75kDa, identified as mu heavy chain of human immunoglobulins. It does not cross-react with alpha (IgA), gamma (IgG), epsilon (IgE), or delta (IgD), heavy chains, T-cells, monocytes, granulocytes, or erythrocytes. This MAb is useful in the identification of leukemias, plasmacytomas, and certain non-Hodgkin s lymphomas. The most common feature of these malignancies is the restricted expression of a single heavy chain class. Demonstration of clonality in lymphoid infiltrates indicates that the infiltrate is clonal and therefore malignant.

## Application Notes

Optimal dilution of the recombinant IgM antibody should be determined by the researcher.

## Immunogen

Full length recombinant human IGHM protein was used as the immunogen for the recombinant IgM antibody.

## Storage

Store the recombinant IgM antibody at 2-8oC (with azide) or aliquot and store at -20oC or colder (without azide).