

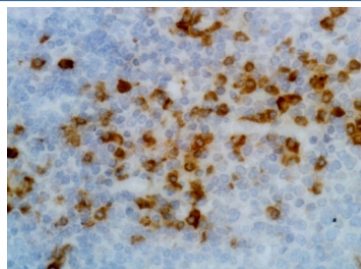
Recombinant Human Kappa Light Chain Antibody [clone RM126] (R20178)

Catalog No.	Formulation	Size
R20178-100UG	1 mg/ml in PBS with 50% glycerol, 1% BSA and 0.09% sodium azide	100 ug

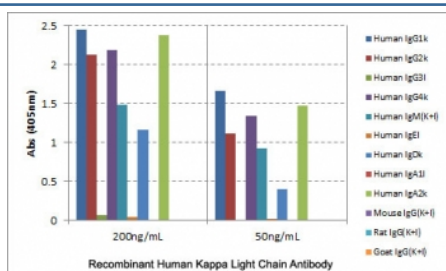
Recombinant **RABBIT MONOCLONAL**

[Bulk quote request](#)

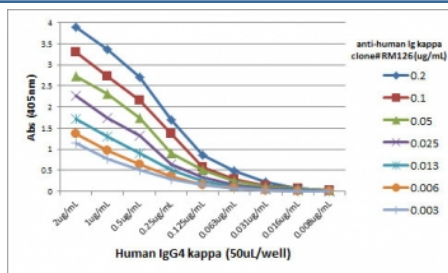
Availability	1-3 business days
Species Reactivity	Human
Format	Purified
Clonality	Recombinant Rabbit Monoclonal
Isotype	Rabbit IgG
Clone Name	RM126
Purity	Protein A purified from animal origin-free supernatant
UniProt	P01834
Gene ID	3514
Applications	ELISA : 0.05-0.2ug/ml Immunocytochemistry : 0.5-2ug/ml Immunohistochemistry : 0.5-2ug/ml
Limitations	This recombinant Human Kappa Light Chain antibody is available for research use only.



IHC testing of FFPE human tonsil tissue with recombinant Human Kappa Light Chain antibody. A pH6 Citrate buffer or pH9 Tris/EDTA buffer HIER step is recommended for testing of FFPE tissue sections.



ELISA of human immunoglobulins shows the recombinant Human Kappa Light Chain antibody reacts to the kappa light chain of hIgs. No cross reactivity with the lambda light chain, mouse/rat/goat IgG.



ELISA Titration: the plate was coated with different amounts of human IgG4κ. A serial dilution of the recombinant Human Kappa Light Chain antibody was used as the primary and an alkaline phosphatase conjugated anti-rabbit IgG as the secondary.

Description

This recombinant Human Kappa Light Chain antibody reacts to the kappa light chain of human immunoglobulins. No cross reactivity with lambda or mouse/rat/goat IgG.

Application Notes

The stated application concentrations are suggested starting points. Titration of the recombinant Human Kappa Light Chain antibody may be required due to differences in protocols and secondary/substrate sensitivity.

Immunogen

Human IgG was used as the immunogen for this recombinant Human Kappa Light Chain antibody.

Storage

Store the recombinant Human Kappa Light Chain antibody at -20oC (with glycerol) or aliquot and store at -20oC (without glycerol).