

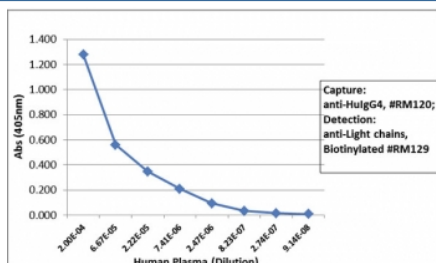
Recombinant Human IgG4 Antibody / Hinge region [clone RM120] (R20190)

Catalog No.	Formulation	Size
R20190-100UG	1 mg/ml in PBS with 50% glycerol, 1% BSA and 0.09% sodium azide	100 ug

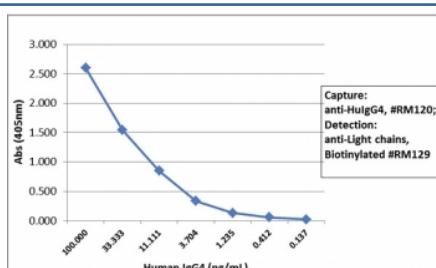
Recombinant **RABBIT MONOCLONAL**

[Bulk quote request](#)

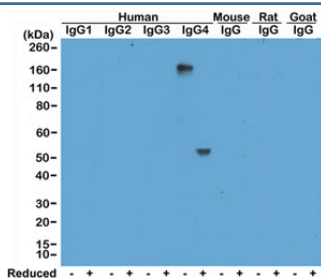
Availability	1-3 business days
Species Reactivity	Human
Format	Purified
Clonality	Recombinant Rabbit Monoclonal
Isotype	Rabbit IgG
Clone Name	RM120
Purity	Protein A purified from animal origin-free supernatant
UniProt	P01861
Gene ID	3503
Applications	ELISA : 50ng/well-200ng/well (Capture); 0.05-0.2ug/ml (Detection) Immunocytochemistry : 1-10ug/ml Immunohistochemistry : 1-10ug/ml (1)
Limitations	This recombinant Human IgG4 antibody is available for research use only.



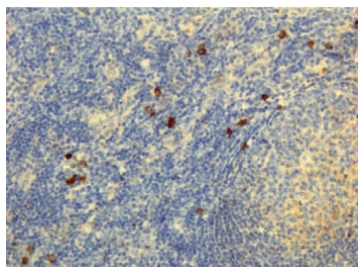
Sandwich ELISA with human plasma using recombinant Human IgG4 antibody as the capture, and [anti-human light chains \(κ +λ\) antibody RM129](#) as the detect, followed by an AP conjugated streptavidin



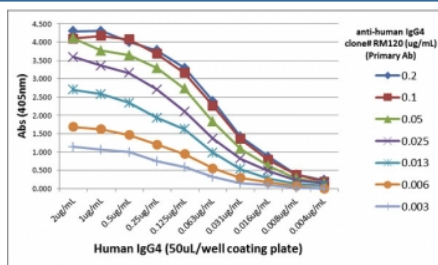
Sandwich ELISA with human IgG4 using recombinant Human IgG4 antibody as the capture, and [anti-human light chains \(κ +λ\) antibody RM129](#) as the detect, followed by an AP conjugated streptavidin.



Western blot of human, mouse, rat, and goat IgG shows the recombinant Human IgG4 antibody reacts to hlgG4, in both whole molecule (~150kDa, non-reduced) and heavy chain (~50kDa, reduced) forms. No cross reactivity with other isotypes of hlgG, or mouse/rat/goat IgG.



IHC testing of FFPE human lymphoid tissue with recombinant Human IgG4 antibody.



ELISA Titration: the plate was coated with different amounts of hlgG4. A serial dilution of recombinant Human IgG4 antibody was used as the primary and an alkaline phosphatase conjugated anti-rabbit IgG as the secondary.

Description

This recombinant Human IgG4 antibody reacts to the heavy chain of hlgG4. No cross reactivity with human IgG1, IgG2, IgG3, IgM, IgA, IgD, IgE, mouse/rat/goat IgG.

Application Notes

The stated application concentrations are suggested starting points. Titration of the recombinant Human IgG4 antibody may be required due to differences in protocols and secondary/substrate sensitivity.

1. A pH6 Citrate buffer or pH9 Tris/EDTA buffer HIER step is recommended for testing of FFPE tissue sections.

Immunogen

Peptide corresponding to the hinge region of human IgG4 was used as the immunogen for this recombinant Human IgG4 antibody.

Storage

Store the recombinant Human IgG4 antibody at -20oC (with glycerol) or aliquot and store at -20oC (without glycerol).

