

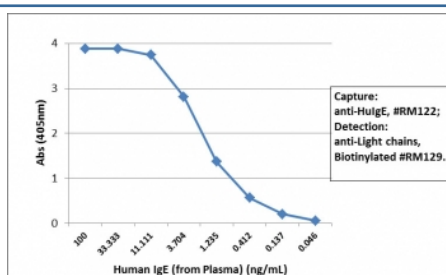
Recombinant Human IgE Antibody [clone RM122] (R20186)

Catalog No.	Formulation	Size
R20186-100UG	1 mg/ml in PBS with 50% glycerol, 1% BSA and 0.09% sodium azide	100 ug

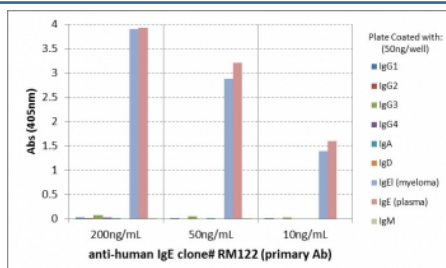
Recombinant **RABBIT MONOCLONAL**

[Bulk quote request](#)

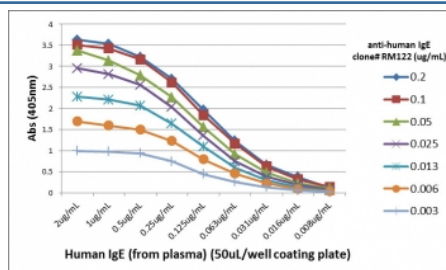
Availability	1-3 business days
Species Reactivity	Human
Format	Purified
Clonality	Recombinant Rabbit Monoclonal
Isotype	Rabbit IgG
Clone Name	RM122
Purity	Protein A purified from animal origin-free supernatant
UniProt	P01854
Gene ID	3497
Applications	ELISA : 10ng/well-100ng/well (Capture); 0.01-0.1ug/ml (Detection)
Limitations	This recombinant Human IgE antibody is available for research use only.



Sandwich ELISA with human plasma using recombinant Human IgE antibody as the capture (25ng/well) and [biotinylated anti-human light chains \(?+?\) antibody clone RM129](#) as the detect, followed by an alkaline phosphatase conjugated streptavidin.



ELISA of hIgs shows recombinant Human IgE antibody reacts only to IgE? from human myeloma and the IgE from human plasma. No cross reactivity with IgG, IgM, IgD, or IgA.



ELISA Titration: the plate was coated with different amounts of hIgE. A serial dilution of recombinant Human IgE antibody was used as the primary and an alkaline phosphatase conjugated anti-rabbit IgG as the secondary.

Description

This recombinant Human IgE antibody reacts to hIgE. No cross reactivity with IgG, IgM, IgD, or IgA.

Application Notes

The stated application concentrations are suggested starting points. Titration of the recombinant Human IgE antibody may be required due to differences in protocols and secondary/substrate sensitivity.

Immunogen

Human IgE was used as the immunogen for this recombinant Human IgE antibody.

Storage

Store the recombinant Human IgE antibody at -20oC (with glycerol) or aliquot and store at -20oC (without glycerol).