

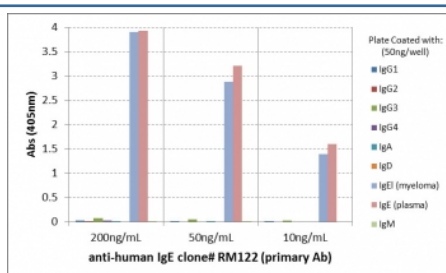
Recombinant Human IgE Antibody (Biotin Conjugate) [clone RM122] (R20186BTN)

| Catalog No. | Formulation | Size |
|----------------|---|-------|
| R20186BTN-50UG | 1 mg/ml in PBS with 50% glycerol, 1% BSA and 0.09% sodium azide | 50 ug |

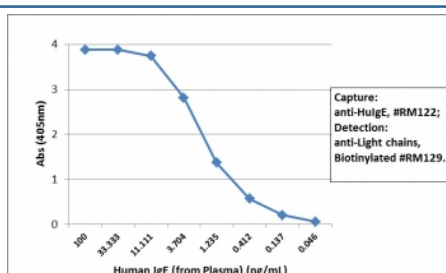
Recombinant **RABBIT MONOCLONAL**

[Bulk quote request](#)

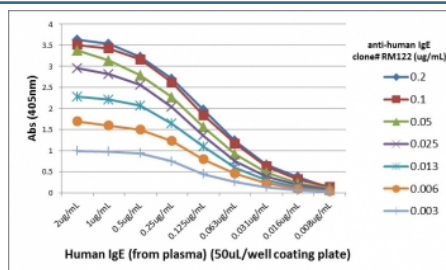
| | |
|--------------------|---|
| Availability | 1-3 business days |
| Species Reactivity | Human |
| Format | Biotin Conjugate |
| Clonality | Recombinant Rabbit Monoclonal |
| Isotype | Rabbit IgG |
| Clone Name | RM122 |
| Purity | Protein A purified from animal origin-free supernatant |
| UniProt | P01854 |
| Gene ID | 3497 |
| Applications | ELISA : 10ng/well-100ng/well (Capture); 0.01-0.1ug/ml (Detection) |
| Limitations | This recombinant Human IgE antibody is available for research use only. |



ELISA of hIgs shows recombinant Human IgE antibody reacts only to IgE^{#955}; from human myeloma and the IgE from human plasma. No cross reactivity with IgG, IgM, IgD, or IgA.



Sandwich ELISA with human plasma using recombinant Human IgE antibody as the capture (25ng/well) and [recombinant-human-ig-light-chains-antibody-rabbit-monoclonal-r20180btn](#) biotinylated anti-human light chains (^{#954};^{+λ};) antibody clone RM129 as the detect, followed by an alkaline phosphatase conjugated streptavidin.



ELISA Titration: the plate was coated with different amounts of hIgE. A serial dilution of recombinant Human IgE antibody was used as the primary and an alkaline phosphatase conjugated anti-rabbit IgG as the secondary.

Description

This recombinant Human IgE antibody reacts to human IgE. No cross reactivity with human IgG, IgM, IgD, or IgA.

Application Notes

The stated application concentrations are suggested starting points. Titration of the recombinant Human IgE antibody may be required due to differences in protocols and secondary/substrate sensitivity.

1. A pH6 Citrate buffer or pH9 Tris/EDTA buffer HIER step is recommended for testing of FFPE tissue sections.

Immunogen

Human IgE was used as the immunogen for this recombinant Human IgE antibody.

Storage

Store the recombinant Human IgE antibody at -20oC.