

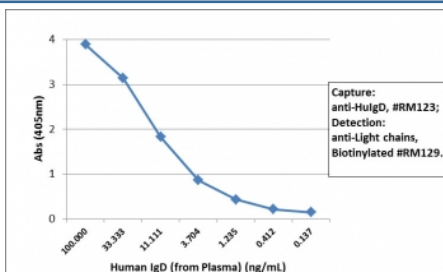
Recombinant Human IgD Antibody (Biotin Conjugate) [clone RM123] (R20185BTN)

Catalog No.	Formulation	Size
R20185BTN-50UG	1 mg/ml in PBS with 50% glycerol, 1% BSA and 0.09% sodium azide	50 ug

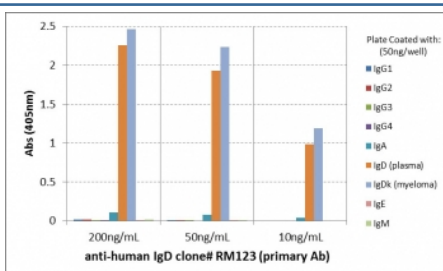
Recombinant **RABBIT MONOCLONAL**

[Bulk quote request](#)

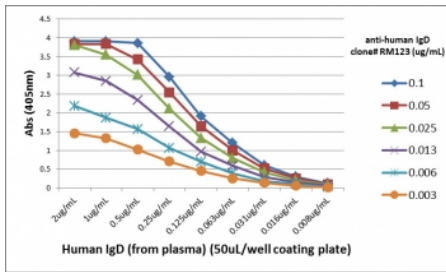
Availability	1-3 business days
Species Reactivity	Human
Format	Biotin Conjugate
Clonality	Recombinant Rabbit Monoclonal
Isotype	Rabbit IgG
Clone Name	RM123
Purity	Protein A purified from animal origin-free supernatant
UniProt	P01880
Gene ID	3495
Applications	ELISA : 25ng/well-200ng/well (Capture); 0.01-0.1ug/ml (Detection)
Limitations	This recombinant Human IgD antibody is available for research use only.



Sandwich ELISA of human plasma using recombinant Human IgD antibody as the capture (100ng/well) and biotinylated anti-human light chains (?+?) antibody RM129 as the detect, followed by an alkaline phosphatase conjugated streptavidin.



ELISA of hIgs shows recombinant Human IgD antibody reacts to IgD from human plasma and IgD,? from human myeloma. No cross reactivity with IgG, IgM, IgA, or IgE.



ELISA Titration: the plate was coated with different amounts of human IgD (from plasma). A serial dilution of recombinant Human IgD antibody was used as the primary and an alkaline phosphatase conjugated anti-rabbit IgG as the secondary.

Description

This recombinant Human IgD antibody reacts to hIgD. No cross reactivity with IgG, IgM, IgA, or IgE.

Application Notes

The stated application concentrations are suggested starting points. Titration of the recombinant Human IgD antibody may be required due to differences in protocols and secondary/substrate sensitivity.

Immunogen

Human IgD was used as the immunogen for this recombinant Human IgD antibody.

Storage

Store the recombinant Human IgD antibody at -20oC.