

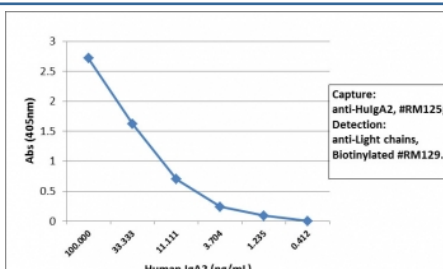
## Recombinant Human IgA2 Antibody (Biotin Conjugate) [clone RM125] (R20184BTN)

Catalog No.	Formulation	Size
R20184BTN-50UG	1 mg/ml in PBS with 50% glycerol, 1% BSA and 0.09% sodium azide	50 ug

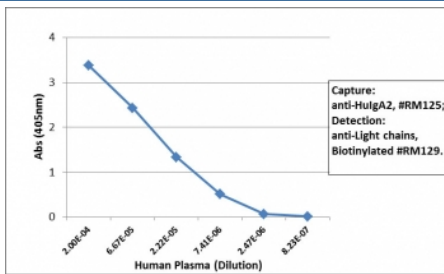
Recombinant **RABBIT MONOCLONAL**

[Bulk quote request](#)

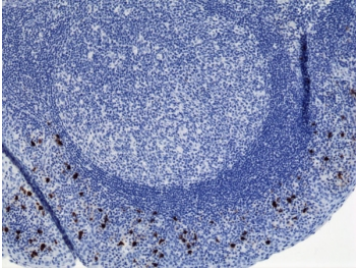
<b>Availability</b>	1-3 business days
<b>Species Reactivity</b>	Human
<b>Format</b>	Biotin Conjugate
<b>Clonality</b>	Recombinant Rabbit Monoclonal
<b>Isotype</b>	Rabbit IgG
<b>Clone Name</b>	RM125
<b>Purity</b>	Protein A purified from animal origin-free supernatant
<b>UniProt</b>	P01877
<b>Gene ID</b>	3494
<b>Applications</b>	ELISA : 50ng/well-200ng/well (Capture); 0.05-0.2ug/ml (Detection) Immunocytochemistry : 0.5-2ug/ml Immunohistochemistry : 0.1-1ug/ml
<b>Limitations</b>	This recombinant Human IgA2 antibody is available for research use only.



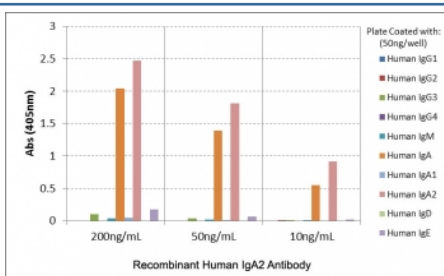
Sandwich ELISA of human IgA2 using recombinant Human IgA2 antibody as the capture (100ng/well), and [recombinant-human-ig-light-chains-antibody-rabbit-monoclonal-r20180btn](#) biotinylated anti-human light chains (&#954;+&#955;) antibody clone RM129 as the detect, followed by an alkaline phosphatase conjugated streptavidin.



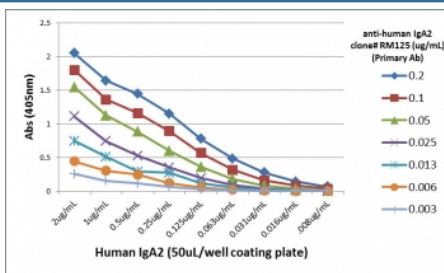
Sandwich ELISA of human plasma using recombinant Human IgA2 antibody as the capture (100ng/well), and <a href=.../tds/recombinant-human-ig-light-chains-antibody-rabbit-mono-clonal-r20180btn>biotinylated anti-human light chains (&#954;+&#955;) antibody clone RM129</a> as the detect, followed by an alkaline phosphatase conjugated streptavidin.



IHC testing of FFPE human tonsil with recombinant Human IgA2 antibody (clone RM125). A pH6 Citrate buffer or pH9 Tris/EDTA buffer HIER step is recommended for testing of FFPE tissue sections.



ELISA of human immunoglobulins shows recombinant Human IgA2 antibody reacts only to IgA2. No cross reactivity with IgA1, IgG, IgM, IgD, or IgE.



ELISA Titration: the plate was coated with different amounts of human IgA2. A serial dilution of recombinant Human IgA2 antibody was used as the primary and an alkaline phosphatase conjugated anti-rabbit IgG as the secondary.

## Description

This recombinant Human IgA2 antibody reacts to human IgA2. No cross reactivity with human IgA1, IgG, IgM, IgD, or IgE.

## Application Notes

The stated application concentrations are suggested starting points. Titration of the recombinant Human IgA2 antibody may be required due to differences in protocols and secondary/substrate sensitivity.

## Immunogen

Human IgA2 was used as the immunogen for this recombinant Human IgA2 antibody.

## Storage

Store the recombinant Human IgA2 antibody at -20oC.

