

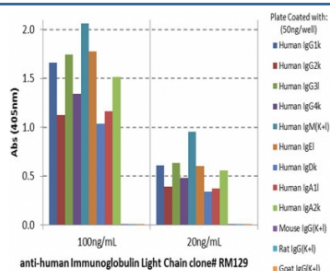
## Recombinant Human Ig Light Chains Antibody [clone RM129] (R20180)

Catalog No.	Formulation	Size
R20180-100UG	1 mg/ml in PBS with 50% glycerol, 1% BSA and 0.09% sodium azide	100 ug

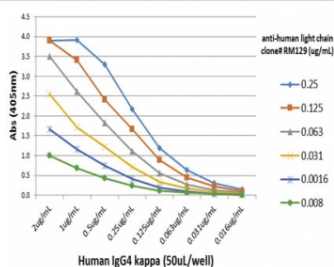
Recombinant RABBIT MONOCLONAL

[Bulk quote request](#)

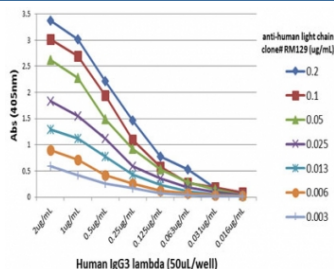
Availability	1-3 business days
Species Reactivity	Human
Format	Purified
Clonality	Recombinant Rabbit Monoclonal
Isotype	Rabbit IgG
Clone Name	RM129
Purity	Protein A purified from animal origin-free supernatant
UniProt	P01834
Applications	ELISA : 0.1 ug/ml-0.5 ug/ml Immunocytochemistry : 0.5ug/ml-2ug/ml Immunohistochemistry : (FFPE)
Limitations	This recombinant Human Ig Light Chains antibody is available for research use only.



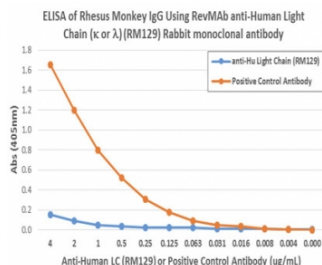
ELISA of human immunoglobulins shows recombinant Human Ig Light Chains antibody reacts to both kappa and lambda light chains of human immunoglobulins. No cross reactivity with mouse, rat, or goat immunoglobulin light chain.



Recombinant Human Ig Light Chains antibody used to detect the kappa chain of hlgG4.



Recombinant Human Ig Light Chains antibody used to detect the lambda chain of hIgG3.



The recombinant Human Ig Light Chains antibody does not cross-react with monkey IgG.

## Description

This antibody reacts to both kappa and lambda light chain of human immunoglobulins. It does not react to monkey (Cyno or Rhesus) IgG, mouse IgG, rat IgG, or goat IgG.

## Application Notes

The stated application concentrations are suggested starting points. Titration of the recombinant Human Ig Light Chains antibody may be required due to differences in protocols and secondary/substrate sensitivity.

## Immunogen

Human IgG was used as the immunogen for the recombinant Human Ig Light Chains antibody

## Storage

Store the recombinant Human Ig Light Chains antibody at -20°C.