

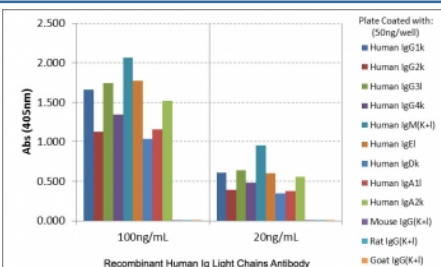
Recombinant Human Ig Light Chains Antibody (Biotin Conjugate) [clone RM129] (R20180BTN)

Catalog No.	Formulation	Size
R20180BTN-50UG	1 mg/ml in PBS with 50% glycerol, 1% BSA and 0.09% sodium azide	50 ug

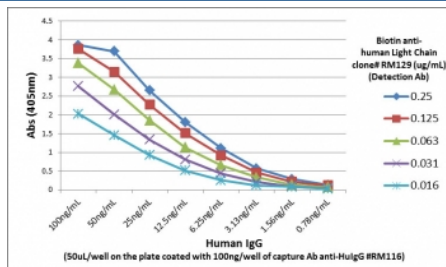
Recombinant **RABBIT MONOCLONAL**

[Bulk quote request](#)

Availability	1-3 business days
Species Reactivity	Human
Format	Biotin Conjugate
Clonality	Recombinant Rabbit Monoclonal
Isotype	Rabbit IgG
Clone Name	RM129
Purity	Protein A purified from animal origin-free supernatant
UniProt	P01834
Gene ID	3514, 3537
Applications	ELISA : 0.02ug/ml-0.25ug/ml Immunocytochemistry : 0.5-2ug/ml Immunohistochemistry : 0.5-2ug/ml (1)
Limitations	This recombinant Human Ig Light Chains antibody is available for research use only.



ELISA of human immunoglobulins shows recombinant Human Ig Light Chains antibody reacts to both kappa and lambda light chains of human immunoglobulins. No cross reactivity with mouse, rat, or goat immunoglobulin light chain.



A titer sandwich ELISA using biotinylated recombinant Human Ig Light Chains antibody as the detection antibody. The plate, coated with the capture (anti-human IgG RM116), was loaded with different amounts of human IgG. A serial dilution of biotin-RM129 was used as the detect.

Description

This recombinant Human Ig Light Chains antibody reacts to both kappa and lambda light chains of human immunoglobulins. No cross reactivity with mouse, rat, or goat immunoglobulin light chain.

Application Notes

The stated application concentrations are suggested starting points. Titration of the recombinant Human Ig Light Chains antibody may be required due to differences in protocols and secondary/substrate sensitivity.

1. A pH6 Citrate buffer or pH9 Tris/EDTA buffer HIER step is recommended for testing of FFPE tissue sections.

Immunogen

Human IgG was used as the immunogen for this recombinant Human Ig Light Chains antibody.

Storage

Store the recombinant Human Ig Light Chains antibody at -20oC.