

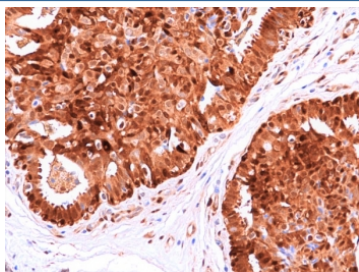
Recombinant HSP70 Antibody [clone RM432] (R20447)

Catalog No.	Formulation	Size
R20447-0.1ML	Antibody in PBS with 50% glycerol, 1% BSA and 0.09% sodium azide	100 ul

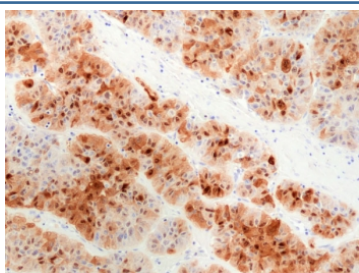
Recombinant **RABBIT MONOCLONAL**

[Bulk quote request](#)

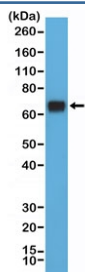
Availability	1-3 business days
Species Reactivity	Human
Format	Purified
Clonality	Recombinant Rabbit Monoclonal
Isotype	Rabbit IgG
Clone Name	RM432
Purity	Protein A purified from animal origin-free supernatant
UniProt	P0DMV8
Localization	Cytoplasmic
Applications	Immunohistochemistry (FFPE) : 1:100-1:500 Western Blot : 1:2000-1:5000
Limitations	This recombinant HSP70 antibody is available for research use only.



IHC staining of FFPE human breast cancer tissue with recombinant HSP70 antibody at 1:200.



IHC staining of FFPE human liver cancer tissue with recombinant HSP70 antibody at 1:500.



Western blot testing of human HeLa cell lysate with recombinant HSP70 antibody at 1:5000 dilution. Expected molecular weight ~70 kDa.

Description

This antibody reacts to human HSP70/Heat shock 70 kDa protein.

Application Notes

The stated application concentrations are suggested starting points. Titration of the recombinant HSP70 antibody may be required due to differences in protocols and secondary/substrate sensitivity.

Immunogen

A recombinant human HSP70 protein was used as the immunogen for the recombinant HSP70 antibody.

Storage

Store the recombinant HSP70 antibody at -20°C.