

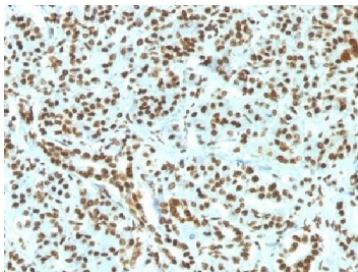
Recombinant Histone H1 Antibody / Rabbit Monoclonal [clone HH1/1784R] (V7278)

Catalog No.	Formulation	Size
V7278-100UG	0.2 mg/ml in 1X PBS with 0.1 mg/ml BSA (US sourced) and 0.05% sodium azide	100 ug
V7278-20UG	0.2 mg/ml in 1X PBS with 0.1 mg/ml BSA (US sourced) and 0.05% sodium azide	20 ug
V7278SAF-100UG	1 mg/ml in 1X PBS; BSA free, sodium azide free	100 ug
V7278IHC-7ML	Prediluted in 1X PBS with 0.1 mg/ml BSA (US sourced) and 0.05% sodium azide; *For IHC use only*	7 ml

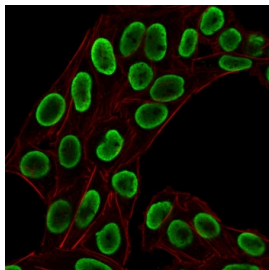
Recombinant RABBIT MONOCLONAL

[Bulk quote request](#)

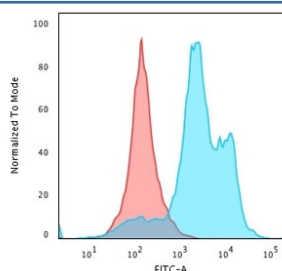
Availability	1-3 business days
Species Reactivity	Human, Mouse, Rat
Format	Purified
Clonality	Recombinant Rabbit Monoclonal
Isotype	Rabbit IgG, kappa
Clone Name	HH1/1784R
Purity	Protein A affinity chromatography
UniProt	P07305
Localization	Nuclear
Applications	Flow Cytometry : 1-2ug/million cells Immunofluorescence : 1-2ug/ml Immunohistochemistry (FFPE) : 1-2ug/ml for 30 min at RT Western Blot : 1-2ug/ml
Limitations	This recombinant Histone H1 antibody is available for research use only.



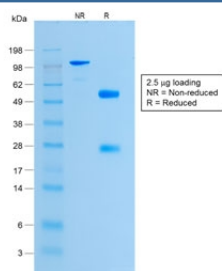
IHC testing of FFPE human pancreas and recombinant Histone H1 antibody (clone HH1/1784R). Required HIER: boil tissue sections in pH 9 10mM Tris with 1mM EDTA for 10-20 min.



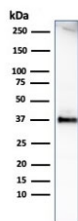
Immunofluorescent staining of permeabilized human HeLa cells with recombinant Histone H1 antibody (green, clone HH1/1784R) and Phalloidin.



Flow cytometry testing of PFA-fixed human HeLa cells with recombinant Histone H1 antibody (clone HH1/1784R); Red=isotype control, Blue= recombinant Histone H1 antibody.



SDS-PAGE analysis of purified, BSA-free recombinant Histone H1 antibody (clone HH1/1784R) as confirmation of integrity and purity.



Western blot testing of human heart lysate with recombinant Histone H1 (clone HH1/1784R). Observed molecular weight ~22/30-33 kDa (unmodified/modified).

Description

Histones H1 are necessary for the condensation of nucleosome chains into higher-order structures. The H1F0 histones are found in cells that are in terminal stages of differentiation or that have low rates of cell division. [UniProt]

Application Notes

Optimal dilution of the recombinant Histone H1 antibody should be determined by the researcher.

1. The prediluted format is supplied in a dropper bottle and is optimized for use in IHC. After epitope retrieval step (if required), drip mAb solution onto the tissue section and incubate at RT for 30 min.

Immunogen

Recombinant full-length human protein was used as the immunogen for the rabbit monoclonal recombinant Histone H1 antibody.

Storage

Store the recombinant Histone H1 antibody at 2-8°C (with azide) or aliquot and store at -20°C or colder (without azide).