

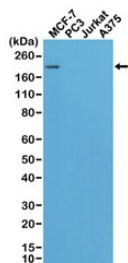
Recombinant HER2 Antibody [clone RM228] (R20258)

Catalog No.	Formulation	Size
R20258-0.1ML	Antibody in PBS with 50% glycerol, 1% BSA and 0.09% sodium azide	0.1 ml

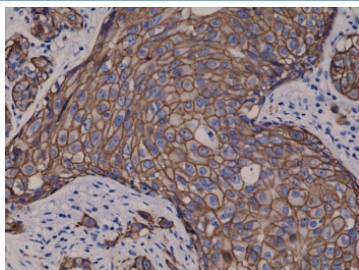
Recombinant **RABBIT MONOCLONAL**

[Bulk quote request](#)

Availability	1-3 business days
Species Reactivity	Human
Format	Purified
Clonality	Recombinant Rabbit Monoclonal
Isotype	Rabbit IgG
Clone Name	RM228
Purity	Protein A purified from animal origin-free supernatant
UniProt	P04626
Gene ID	2064
Localization	Cell surface, cytoplasm, nucleus
Applications	Immunohistochemistry (FFPE) : 1:100-1:400 (1) Western Blot : 1:1000
Limitations	This recombinant HER2 antibody is available for research use only.



Western blot of MCF7, PC3, Jurkat, and A375 cell lysate using recombinant HER2 antibody. Only the breast cancer line MCF7 showed a response.



IHC testing of FFPE human breast cancer tissue with recombinant HER2 antibody. Expected molecular weight: ~138 kDa (unmodified), ~185 kDa (glycosylated).

Description

This recombinant HER2 antibody reacts to Human c-erbB-2/HER-2. It may also react to mouse or rat c-erbB-2/HER-2, as predicted by immunogen homology.

Application Notes

The stated application concentrations are suggested starting points. Titration of the recombinant HER2 antibody may be required due to differences in protocols and secondary/substrate sensitivity.

1. A pH6 Citrate buffer or pH9 Tris/EDTA buffer HIER step is recommended for testing of FFPE tissue sections.

Immunogen

A peptide corresponding to the C-terminus of human c-erbB2/HER2 was used as the immunogen for this recombinant HER2 antibody.

Storage

Store the recombinant HER2 antibody at -20oC (with glycerol) or aliquot and store at -20oC (without glycerol).