

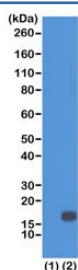
## Recombinant H3K18me2 Antibody [clone RM168] (R20217)

Catalog No.	Formulation	Size
R20217-100UG	1 mg/ml in PBS with 50% glycerol, 1% BSA and 0.09% sodium azide	100 ug
R20217-25UG	1 mg/ml in PBS with 50% glycerol, 1% BSA and 0.09% sodium azide	25 ug

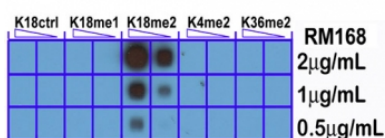
Recombinant **RABBIT MONOCLONAL**

[Bulk quote request](#)

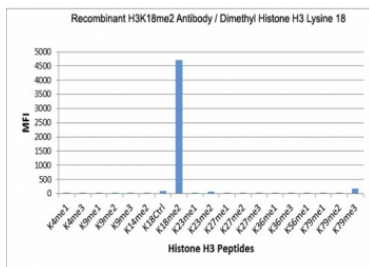
Availability	1-3 business days
Species Reactivity	All Species
Format	Purified
Clonality	Recombinant Rabbit Monoclonal
Isotype	Rabbit IgG
Clone Name	RM168
Purity	Protein A purified from animal origin-free supernatant
UniProt	P84243
Gene ID	8350
Applications	Western Blot : 0.2-1ug/ml ELISA : 0.1ug/ml-0.5ug/ml
Limitations	This recombinant H3K18me2 antibody is available for research use only.



Western blot of recombinant Histone H3.3 (1) and acid extracts of HeLa cells (2) using recombinant H3K18me2 antibody at 0.5 ug/ml showed a band of Histone H3 dimethylated at Lysine 18 (K18me2) in HeLa cells.



A peptide dot blot shows the recombinant H3K18me2 antibody only reacts to Histone H3 dimethyl-Lysine 18 (K18me2). No cross reactivity with unmodified (K18Ctrl) or monomethylated Lysine 18 (K18me1), dimethylated Lysine 4 (K4me2) or dimethylated Lysine 36 (K36me2).



The recombinant H3K18me2 antibody specifically reacts to Histone H3 dimethylated at Lysine 18 (K18me2). No cross reactivity with other methylated lysines in Histone H3.

## Description

This recombinant H3K18me2 antibody reacts to Histone H3 dimethylated at Lysine 18 (K18me2). No cross reactivity with monomethylated (K18me1) or trimethylated Lysine 18 (K18me3), or other methylation in Histone H3.

## Application Notes

The stated application concentrations are suggested starting points. Titration of the recombinant H3K18me2 antibody may be required due to differences in protocols and secondary/substrate sensitivity.

## Immunogen

A dimethyl-peptide corresponding to Dimethyl-Histone H3 (Lys18) was used as the immunogen for this recombinant H3K18me2 antibody.

## Storage

Store the recombinant H3K18me2 antibody at -20oC (with glycerol) or aliquot and store at -20oC (without glycerol).