

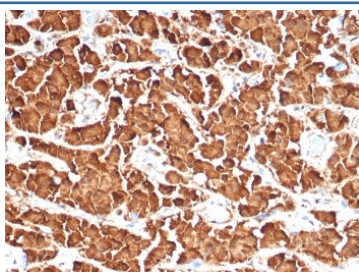
Recombinant Growth Hormone Antibody / GH1 [clone GH/4886R] (V9341)

Catalog No.	Formulation	Size
V9341-100UG	0.2 mg/ml in 1X PBS with 0.1 mg/ml BSA (US sourced), 0.05% sodium azide	100 ug
V9341-20UG	0.2 mg/ml in 1X PBS with 0.1 mg/ml BSA (US sourced), 0.05% sodium azide	20 ug
V9341SAF-100UG	1 mg/ml in 1X PBS; BSA free, sodium azide free	100 ug

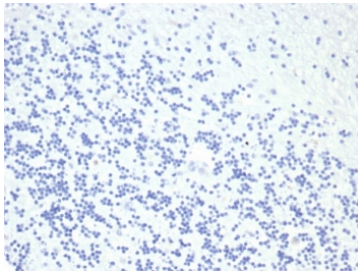
Recombinant **RABBIT MONOCLONAL**

[Bulk quote request](#)

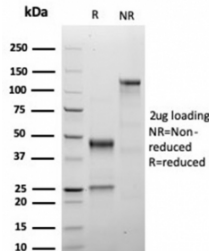
Availability	1-3 business days
Species Reactivity	Human
Format	Purified
Clonality	Recombinant Rabbit Monoclonal
Isotype	Rabbit IgG
Clone Name	GH/4886R
Purity	Protein A/G affinity
UniProt	P01241
Localization	Cytoplasm
Applications	Immunohistochemistry (FFPE) : 1-2ug/ml
Limitations	This recombinant Growth Hormone antibody is available for research use only.



IHC staining of FFPE human pituitary tissue with recombinant Growth Hormone antibody (clone GH/4886R). HIER: boil tissue sections in pH 9 10mM Tris with 1mM EDTA for 20 min and allow to cool before testing.



Negative control: IHC staining of FFPE human brain tissue using recombinant Growth Hormone antibody (clone rGH/4887) at 2ug/ml in PBS for 30min RT. HIER: boil tissue sections in pH 9 10mM Tris with 1mM EDTA for 20 min and allow to cool before testing.



SDS-PAGE analysis of purified, BSA-free recombinant Growth Hormone antibody (clone GH/4886R) as confirmation of integrity and purity.

Description

Pituitary growth hormone (GH) plays a crucial role in stimulating and controlling the growth, metabolism and differentiation of many mammalian cell types by modulating the synthesis of multiple mRNA species. These effects are mediated by the binding of GH to its membrane-bound receptor, GHR, and involve a phosphorylation cascade that results in the modulation of numerous signaling pathways. GH is synthesized by acidophilic or somatotrophic cells of the anterior pituitary gland. Anti-GH is a useful marker in classification of pituitary tumors and the study of pituitary disease (acromegaly).

Application Notes

Optimal dilution of the recombinant Growth Hormone antibody should be determined by the researcher.

Immunogen

Recombinant full-length human GH1 protein was used as the immunogen for the recombinant Growth Hormone antibody.

Storage

Aliquot the recombinant Growth Hormone antibody and store frozen at -20oC or colder. Avoid repeated freeze-thaw cycles.