

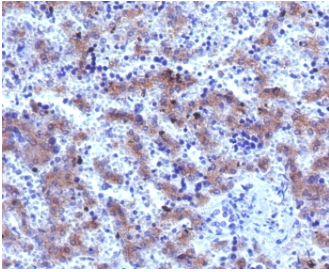
Recombinant Glypican 3 Antibody / GPC3 / Rabbit Monoclonal [clone SGPN3-2R] (V3715)

Catalog No.	Formulation	Size
V3715-100UG	0.2 mg/ml in 1X PBS with 0.1 mg/ml BSA (US sourced) and 0.05% sodium azide	100 ug
V3715-20UG	0.2 mg/ml in 1X PBS with 0.1 mg/ml BSA (US sourced) and 0.05% sodium azide	20 ug
V3715SAF-100UG	1 mg/ml in 1X PBS; BSA free, sodium azide free	100 ug
V3715IHC-7ML	Prediluted in 1X PBS with 0.1 mg/ml BSA (US sourced) and 0.05% sodium azide; *For IHC use only*	7 ml

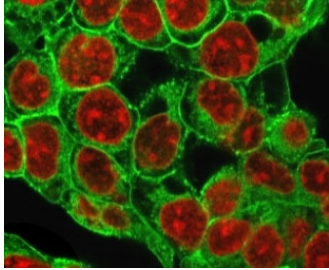
Recombinant RABBIT MONOCLONAL

[Bulk quote request](#)

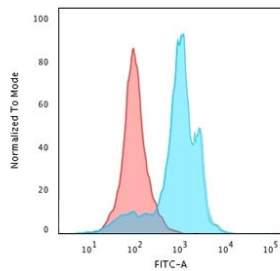
Availability	1-3 business days
Species Reactivity	Human
Format	Purified
Clonality	Recombinant Rabbit Monoclonal
Isotype	Rabbit IgG, kappa
Clone Name	SGPN3-2R
Purity	Protein A affinity chromatography
UniProt	P51654
Localization	Cytoplasmic
Applications	Flow Cytometry : 1-2ug/million cells Immunofluorescence : 1-2ug/ml Immunohistochemistry (FFPE) : 1-2ug/ml for 30 min at RT Prediluted IHC Only Format : incubate for 30 min at RT (1)
Limitations	This recombinant Glypican 3 antibody is available for research use only.



IHC staining of FFPE human hepatocellular carcinoma with Glypican-3 antibody (clone SGPN3-2R). Required HIER: boil tissue sections in 10mM Tris with 1mM EDTA, pH 9, for 10-20 min followed by cooling at RT for 20 min.



Immunofluorescent staining of methanol-fixed HepG2 cells with recombinant Glypican 3 antibody (green, clone SGPN3-2R) and Reddot nuclear stain (red).



Flow cytometry testing of methanol-fixed human HepG2 cells with recombinant Glypican 3 antibody (clone SGPN3-2R); Red=isotype control, Blue= recombinant Glypican 3 antibody.

Description

Glypican-3 is a proteoglycan that bears heparan sulfate. Inhibits the dipeptidyl peptidase activity of DPP4. May be involved in the suppression/modulation of growth in the predominantly mesodermal tissues and organs. May play a role in the modulation of IGF2 interactions with its receptor and thereby modulate its function. May regulate growth and tumor predisposition. [UniProt]

Application Notes

The stated application concentrations are suggested starting points. Titration of the recombinant Glypican 3 antibody may be required due to differences in protocols and secondary/substrate sensitivity.

1. The prediluted format is supplied in a dropper bottle and is optimized for use in IHC. After epitope retrieval step (if required), drip mAb solution onto the tissue section and incubate at RT for 30 min.

Immunogen

Recombinant full-length human protein was used as the immunogen for the recombinant Glypican 3 antibody.

Storage

Store the recombinant Glypican 3 antibody at 2-8°C (with azide) or aliquot and store at -20°C or colder (without azide).

