

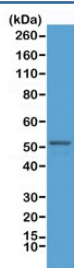
## Recombinant GFAP Antibody / N-Terminal [clone RM246] (R20267)

Catalog No.	Formulation	Size
R20267-0.1ML	Antibody in PBS with 50% glycerol, 1% BSA and 0.09% sodium azide	100 ul

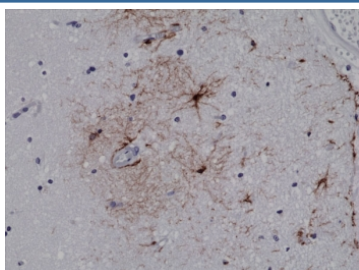
Recombinant **RABBIT MONOCLONAL**

[Bulk quote request](#)

Availability	1-3 business days
Species Reactivity	Human, Mouse
Format	Purified
Clonality	Recombinant Rabbit Monoclonal
Isotype	Rabbit IgG
Clone Name	RM246
Purity	Protein A purified from animal origin-free supernatant
UniProt	P14136
Gene ID	2670
Localization	Cytoplasmic
Applications	Immunohistochemistry (FFPE) : 1:200-1:500 (1) Western Blot : 1:1000-1:3000
Limitations	This recombinant GFAP antibody is available for research use only.



Western blot testing of mouse brain lysate with recombinant GFAP antibody at 1:2500.  
Predicted molecular weight ~50 kDa.



IHC testing of FFPE human brain tissue with recombinant GFAP antibody at 1:500.

## Description

This recombinant GFAP antibody reacts to human and mouse Glial Fibrillary Acidic Protein.

## Application Notes

The stated application concentrations are suggested starting points. Titration of the recombinant GFAP antibody may be required due to differences in protocols and secondary/substrate sensitivity.

1. A pH6 Citrate buffer or pH9 Tris/EDTA buffer HIER step is recommended for testing of FFPE tissue sections.

## Immunogen

A peptide corresponding to the N-terminus of human GFAP was used as the immunogen for this recombinant GFAP antibody.

## Storage

Store the recombinant GFAP antibody at -20oC (with glycerol) or aliquot and store at -20oC (without glycerol).