

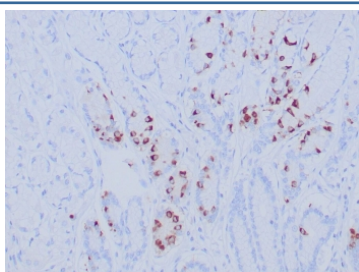
Recombinant Gastrin Antibody [clone GAST/8646R] (V5710)

Catalog No.	Formulation	Size
V5710-100UG	0.2 mg/ml in 1X PBS with 0.1 mg/ml BSA (US sourced), 0.05% sodium azide	100 ug
V5710-20UG	0.2 mg/ml in 1X PBS with 0.1 mg/ml BSA (US sourced), 0.05% sodium azide	20 ug
V5710SAF-100UG	1 mg/ml in 1X PBS; BSA free, sodium azide free	100 ug

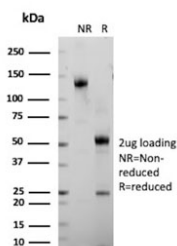
Recombinant **RABBIT MONOCLONAL**

[Bulk quote request](#)

Availability	1-3 business days
Species Reactivity	Human
Format	Purified
Clonality	Recombinant Rabbit Monoclonal
Isotype	Rabbit IgG, kappa
Clone Name	GAST/8646R
Purity	Protein A affinity
UniProt	P01350
Localization	Cytoplasm, Secreted
Applications	Immunohistochemistry (FFPE) : 1-2ug/ml
Limitations	This recombinant Gastrin antibody is available for research use only.



IHC staining of FFPE human gastric antrum tissue with recombinant Gastrin antibody (clone GAST/8646R). Inset: PBS used in place of primary Ab (secondary Ab negative control). HIER: boil tissue sections in pH 9 10mM Tris with 1mM EDTA for 20 min and allow to cool before testing.



SDS-PAGE analysis of purified, BSA-free recombinant Gastrin antibody (clone GAST/8646R) as confirmation of integrity and purity.

Description

Gastrin, is a hormone that normally formed by mucosal cells in the gastric antrum and by the D cells of the pancreatic islets. Its primary function is to stimulate secretion of HCl by the gastric mucosa. HCl, in turn, inhibits gastrin formation. It also responsible for stimulating smooth muscle contraction and increasing blood circulation and water secretion in the stomach and intestine. Gastrin is regulated by epidermal growth factor in both mice and humans. Gastrin is excreted in excess by pancreatic tumors in the Zollinger-Ellison syndrome. Gastrin-Releasing Peptide (GRP) stimulates the release of gastrin as well as other gastrointestinal hormones and also acts as an autocrine growth factor for certain cell types. High levels of GRP are found in the human lung just after birth and levels decrease thereafter in parallel with the observed disease in a number of pulmonary neuroendocrine cells. GRP is known to promote lung tumorigenesis in model systems.

Application Notes

Optimal dilution of the recombinant Gastrin antibody should be determined by the researcher.

Immunogen

A portion of amino acids 1-101 from human GAST protein was used as the immunogen for the recombinant Gastrin antibody.

Storage

Aliquot the recombinant Gastrin antibody and store frozen at -20oC or colder. Avoid repeated freeze-thaw cycles.