

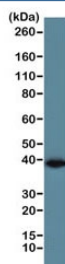
Recombinant GAPDH Antibody (Loading Control) [clone RM114] (R20198)

Catalog No.	Formulation	Size
R20198-0.1ML	Antibody in PBS with 50% glycerol, 1% BSA and 0.09% sodium azide	100 ul

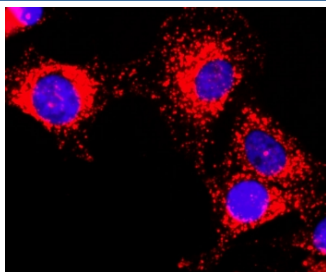
Recombinant **RABBIT MONOCLONAL**

[Bulk quote request](#)

Availability	1-3 business days
Species Reactivity	All Species
Format	Purified
Clonality	Recombinant Rabbit Monoclonal
Isotype	Rabbit IgG
Clone Name	RM114
Purity	Protein A purified from animal origin-free supernatant
UniProt	P04406
Gene ID	2597
Applications	Western Blot : 1:1000 Immunoprecipitation : 1:200 Chromatin IP (ChIP) : 1:200 Immunocytochemistry : 1:200 Immunohistochemistry : 1:200 (1)
Limitations	This recombinant GAPDH antibody is available for research use only.



Western blot of human A431 cell lysate using the recombinant GAPDH antibody at 1:1000. Predicted molecular weight ~36 kDa.



ICC staining of human HeLa cells using recombinant GAPDH antibody at 1:200 (red) and DAPI nuclear stain (blue).

Description

This recombinant GAPDH antibody reacts to Glyceraldehyde 3-phosphate dehydrogenase.

Application Notes

The stated application concentrations are suggested starting points. Titration of the recombinant GAPDH antibody may be required due to differences in protocols and secondary/substrate sensitivity.

1. A pH6 Citrate buffer or pH9 Tris/EDTA buffer HIER step is recommended for testing of FFPE tissue sections.

Immunogen

A peptide corresponding to the C-terminus of GAPDH was used as the immunogen for this recombinant GAPDH antibody.

Storage

Store the recombinant GAPDH antibody at -20oC (with glycerol) or aliquot and store at -20oC (without glycerol).