

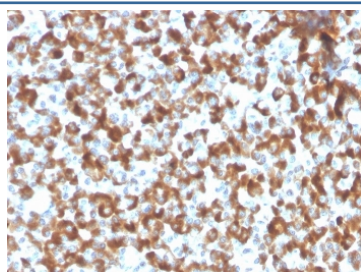
Recombinant FSH beta Antibody [clone FSHb/2033R] (V9140)

| Catalog No. | Formulation | Size |
|----------------|---|--------|
| V9140-100UG | 0.2 mg/ml in 1X PBS with 0.1 mg/ml BSA (US sourced), 0.05% sodium azide | 100 ug |
| V9140-20UG | 0.2 mg/ml in 1X PBS with 0.1 mg/ml BSA (US sourced), 0.05% sodium azide | 20 ug |
| V9140SAF-100UG | 1 mg/ml in 1X PBS; BSA free, sodium azide free | 100 ug |

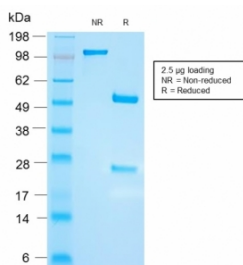
Recombinant **RABBIT MONOCLONAL**

[Bulk quote request](#)

| | |
|---------------------------|--|
| Availability | 1-3 business days |
| Species Reactivity | Human |
| Format | Purified |
| Clonality | Recombinant Rabbit Monoclonal |
| Isotype | Rabbit IgG |
| Clone Name | FSHb/2033R |
| Purity | Protein A/G affinity |
| UniProt | P01225 |
| Localization | Cytoplasmic, secreted |
| Applications | Immunohistochemistry (FFPE) : 1-2ug/ml |
| Limitations | This recombinant FSH beta antibody is available for research use only. |



IHC staining of FFPE human pituitary tissue with recombinant FSH beta antibody (clone FSHb/2033R). HIER: boil tissue sections in pH 9 10mM Tris with 1mM EDTA for 20 min and allow to cool before testing.



SDS-PAGE analysis of purified, BSA-free recombinant FSH beta antibody (clone FSHb/2033R) as confirmation of integrity and purity.

Description

This MAbs reacts with a protein of 22kDa, identified as beta sub-unit of FSH. It does not cross react with the alpha sub-unit. Follicle stimulating hormone (FSH) is a hormone synthesized and secreted by gonadotrophs in the anterior pituitary gland. In the ovary, FSH stimulates the growth of immature Graafian follicles to maturation. As the follicle grows, it releases inhibin, which deactivates the FSH production. In men, FSH enhances the production of androgen-binding protein by the Sertoli cells of the testis and is critical for spermatogenesis. FSH and LH act synergistically in reproduction. FSH is a useful marker in the classification of pituitary tumors and the study of pituitary disease.

Application Notes

Optimal dilution of the recombinant FSH beta antibody should be determined by the researcher.

Immunogen

Recombinant hFSH beta sub-unit was used as the immunogen for the recombinant FSH beta antibody.

Storage

Aliquot the recombinant FSH beta antibody and store frozen at -20oC or colder. Avoid repeated freeze-thaw cycles.