

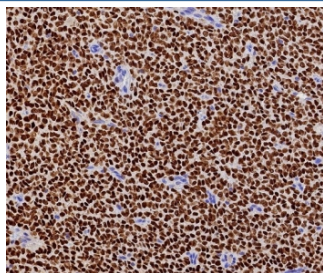
Recombinant FOXL2 Antibody / Forkhead box protein L2 [clone FOXL2/7989R] (V5006)

Catalog No.	Formulation	Size
V5006-100UG	0.2 mg/ml in 1X PBS with 0.1 mg/ml BSA (US sourced), 0.05% sodium azide	100 ug
V5006-20UG	0.2 mg/ml in 1X PBS with 0.1 mg/ml BSA (US sourced), 0.05% sodium azide	20 ug
V5006SAF-100UG	1 mg/ml in 1X PBS; BSA free, sodium azide free	100 ug

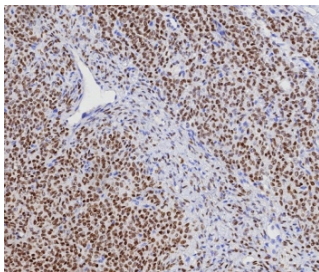
Recombinant **RABBIT MONOCLONAL**

[Bulk quote request](#)

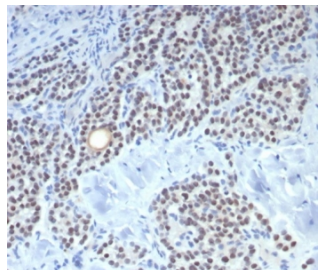
Availability	1-3 business days
Species Reactivity	Human
Format	Purified
Clonality	Recombinant Rabbit Monoclonal
Isotype	Rabbit IgG, kappa
Clone Name	FOXL2/7989R
Purity	Protein A/G affinity
UniProt	P58012
Localization	Nucleus
Applications	Immunohistochemistry (FFPE) : 1-2ug/ml for 30 min at RT
Limitations	This recombinant FOXL2 antibody is available for research use only.



FFPE human ovarian adult granulosa cell tumor with recombinant FOXL2 antibody (clone FOXL2/7989R). HIER: boil tissue sections in pH 9 10mM Tris with 1mM EDTA for 20 min and allow to cool before testing.



IHC staining of FFPE human ovarian adult granulosa cell tumor tissue with recombinant FOXL2 antibody (clone FOXL2/7989R). HIER: boil tissue sections in pH 9 10mM Tris with 1mM EDTA for 20 min and allow to cool before testing.



IHC staining of FFPE human parathyroid tissue with recombinant FOXL2 antibody (clone FOXL2/7989R). HIER: boil tissue sections in pH 9 10mM Tris with 1mM EDTA for 20 min and allow to cool before testing.

Description

FOXL2 is a critical factor essential for ovary differentiation and maintenance, and repression of the genetic program for somatic testis determination. It prevents trans-differentiation of ovary to testis through transcriptional repression of the sertoli cell-promoting gene SOX9. FOXL2 is mainly expressed in ovary, parathyroid gland and sex cord-stromal tumors. FOXL2 is generally used for diagnosis of sex cord-stromal tumors with Inhibin, Calretinin and SF-1.

Application Notes

Optimal dilution of the recombinant FOXL2 antibody should be determined by the researcher.

Immunogen

Recombinant full-length human FOXL2 protein was used as the immunogen for the recombinant FOXL2 antibody.

Storage

Aliquot the recombinant FOXL2 antibody and store frozen at -20oC or colder. Avoid repeated freeze-thaw cycles.