

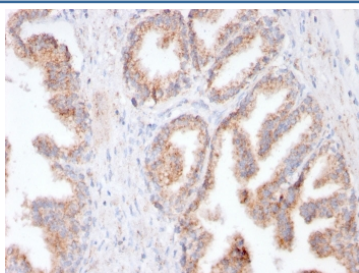
## Recombinant FOLH1 Antibody / Folate Hydrolase 1 [clone FOLH1/3149R] (V7753)

Catalog No.	Formulation	Size
V7753-100UG	0.2 mg/ml in 1X PBS with 0.1 mg/ml BSA (US sourced) and 0.05% sodium azide	100 ug
V7753-20UG	0.2 mg/ml in 1X PBS with 0.1 mg/ml BSA (US sourced) and 0.05% sodium azide	20 ug
V7753SAF-100UG	1 mg/ml in 1X PBS; BSA free, sodium azide free	100 ug

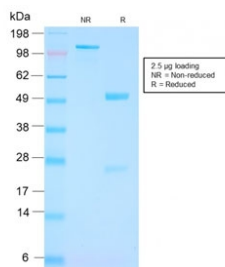
Recombinant **RABBIT MONOCLONAL**

[Bulk quote request](#)

Availability	1-3 business days
Species Reactivity	Human
Format	Purified
Clonality	Recombinant Rabbit Monoclonal
Isotype	Rabbit IgG
Clone Name	FOLH1/3149R
Purity	Protein A affinity chromatography
UniProt	Q04609
Localization	Cytoplasmic, cell surface
Applications	Immunohistochemistry (FFPE) : 1-2ug/ml
Limitations	This recombinant FOLH1 antibody is available for research use only.



IHC testing of FFPE human prostate cancer with recombinant FOLH1 antibody (clone FOLH1/3149R). HIER: boil tissue sections in pH 9 10mM Tris with 1mM EDTA for 10-20 min and allow to cool before testing.



SDS-PAGE analysis of purified, BSA-free recombinant FOLH1 antibody as confirmation of integrity and purity.

## Description

Folate hydrolase 1 (FOLH1), also known as Prostate-specific membrane antigen (PSMA), is a type II transmembrane glycoprotein belonging to the M28 peptidase family. FOLH1 has two enzymatic activities, one as a prostate-specific integral membrane folate hydrolase and the other as a carboxypeptidase. In the prostate the protein is up-regulated in cancerous cells and is used as an effective diagnostic and prognostic indicator of prostate cancer.

## Application Notes

Optimal dilution of the recombinant FOLH1 antibody should be determined by the researcher.

## Immunogen

A portion of amino acids 232-433 from the human protein were used as the immunogen for this recombinant FOLH1 antibody.

## Storage

Store the recombinant FOLH1 antibody at 2-8°C (with azide) or aliquot and store at -20°C or colder (without azide).