

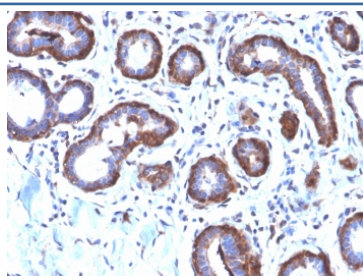
Recombinant Ferritin Light Chain Antibody / Rabbit Monoclonal [clone FTL/2338R] (V3569)

| Catalog No. | Formulation | Size |
|----------------|---|--------|
| V3569-100UG | 0.2 mg/ml in 1X PBS with 0.1 mg/ml BSA (US sourced) and 0.05% sodium azide | 100 ug |
| V3569-20UG | 0.2 mg/ml in 1X PBS with 0.1 mg/ml BSA (US sourced) and 0.05% sodium azide | 20 ug |
| V3569SAF-100UG | 1 mg/ml in 1X PBS; BSA free, sodium azide free | 100 ug |
| V3569IHC-7ML | Prediluted in 1X PBS with 0.1 mg/ml BSA (US sourced) and 0.05% sodium azide; *For IHC use only* | 7 ml |

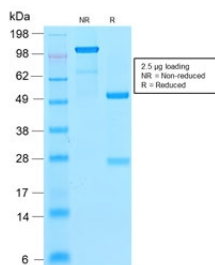
Recombinant RABBIT MONOCLONAL

[Bulk quote request](#)

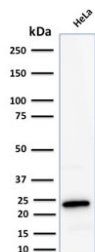
| | |
|--------------------|--|
| Availability | 1-3 business days |
| Species Reactivity | Human |
| Format | Purified |
| Clonality | Recombinant Rabbit Monoclonal |
| Isotype | Rabbit IgG, kappa |
| Clone Name | FTL/2338R |
| Purity | Protein A affinity chromatography |
| UniProt | P02792 |
| Localization | Cytoplasmic |
| Applications | Western Blot : 0.5-2ug/ml Immunohistochemistry (FFPE) : 0.5-1ug/ml for 30 min at RT |
| Limitations | This recombinant Ferritin Light Chain antibody is available for research use only. |



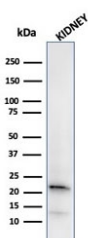
IHC testing of FFPE human breast carcinoma with recombinant Ferritin Light Chain antibody (clone FTL/2338R). Required HIER: boil tissue sections in pH6, 10mM citrate buffer, for 10-20 min followed by cooling at RT for 20 min.



SDS-PAGE analysis of purified, BSA-free recombinant Ferritin Light Chain antibody (clone FTL/2338R) as confirmation of integrity and purity.



Western blot testing of human HeLa lysate with Ferritin Light Chain antibody. Predicted molecular weight: ~20 kDa.



Western blot testing of human kidney lysate with Ferritin Light Chain antibody. Predicted molecular weight: ~20 kDa.

Description

The FTL gene encodes the light subunit of the ferritin protein. Ferritin is the major intracellular iron storage protein in prokaryotes and eukaryotes. It is composed of 24 subunits of the heavy and light ferritin chains. Variation in ferritin subunit composition may affect the rates of iron uptake and release in different tissues. A major function of ferritin is the storage of iron in a soluble and nontoxic state. This gene has multiple pseudogenes.

Although ferritin light chain has no ferroxidase activity, the light chain may be responsible for the electron transfer across the ferritin protein cage. [Wiki]

Application Notes

Optimal dilution of the recombinant Ferritin Light Chain antibody should be determined by the researcher.

1. The prediluted format is supplied in a dropper bottle and is optimized for use in IHC. After epitope retrieval step (if required), drip mAb solution onto the tissue section and incubate at RT for 30 min.

Immunogen

Amino acids 38-165 of human FTL1 were used as the immunogen for this recombinant Ferritin Light Chain antibody.

Storage

Store the recombinant Ferritin Light Chain antibody at 2-8°C (with azide) or aliquot and store at -20°C or colder (without azide).

References (1)

