

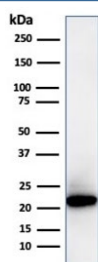
## Recombinant Ferritin Light Chain Antibody / FTL [clone FTL/3872R] (V8527)

Catalog No.	Formulation	Size
V8527-100UG	0.2 mg/ml in 1X PBS with 0.1 mg/ml BSA (US sourced) and 0.05% sodium azide	100 ug
V8527-20UG	0.2 mg/ml in 1X PBS with 0.1 mg/ml BSA (US sourced) and 0.05% sodium azide	20 ug
V8527SAF-100UG	1 mg/ml in 1X PBS; BSA free, sodium azide free	100 ug

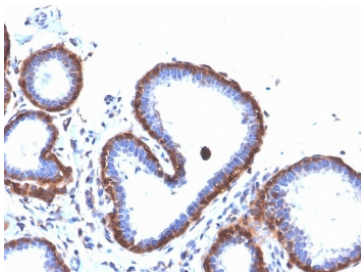
Recombinant **RABBIT MONOCLONAL**

[Bulk quote request](#)

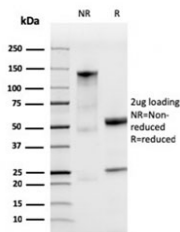
<b>Availability</b>	1-3 business days
<b>Species Reactivity</b>	Human
<b>Format</b>	Purified
<b>Clonality</b>	Recombinant Rabbit Monoclonal
<b>Isotype</b>	Rabbit IgG
<b>Clone Name</b>	FTL/3872R
<b>Purity</b>	Protein A affinity chromatography
<b>UniProt</b>	P02792
<b>Localization</b>	Cytoplasmic
<b>Applications</b>	Western Blot : 2-4ug/ml Immunohistochemistry (FFPE) : 1-2ug/ml for 30 minutes at RT
<b>Limitations</b>	This recombinant Ferritin Light Chain antibody is available for research use only.



Western blot testing of human kidney lysate with recombinant Ferritin Light Chain antibody (clone FTL/3872R). Predicted molecular weight: ~20 kDa.



IHC staining of FFPE human breast carcinoma with recombinant Ferritin Light Chain antibody (clone FTL/3872R). HIER: boil tissue sections in pH 9 10mM Tris with 1mM EDTA for 20 min and allow to cool before testing.



SDS-PAGE analysis of purified, BSA-free recombinant Ferritin Light Chain antibody as confirmation of integrity and purity.

## Description

Mammalian ferritins consist of 24 subunits made up of 2 types of polypeptide chains, ferritin heavy chain and ferritin light chain. Ferritin heavy chains catalyze the first step in iron storage, the oxidation of Fe (II), whereas ferritin light chains promote the nucleation of ferrihydrite, enabling storage of Fe (III). Light chain ferritin is involved in cataracts by at least two mechanisms, hereditary hyperferritinemia cataract syndrome, in which light chain ferritin is overexpressed, and oxidative stress, an important factor in the development of ageing-related cataracts.

## Application Notes

Optimal dilution of the recombinant Ferritin Light Chain antibody should be determined by the researcher.

## Immunogen

Recombinant full-length human FTL protein was used as the immunogen for the recombinant Ferritin Light Chain antibody.

## Storage

Store the recombinant Ferritin Light Chain antibody at 2-8°C (with azide) or aliquot and store at -20°C or colder (without azide).