

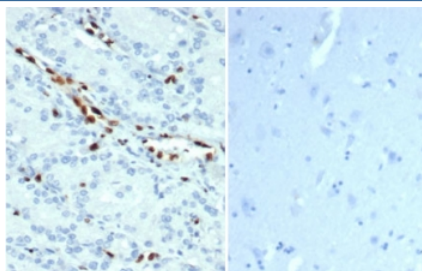
Recombinant ERG Antibody / Transcriptional regulator ERG [clone ERG/22R] (V8970)

| Catalog No. | Formulation | Size |
|----------------|---|--------|
| V8970-100UG | 0.2 mg/ml in 1X PBS with 0.1 mg/ml BSA (US sourced), 0.05% sodium azide | 100 ug |
| V8970-20UG | 0.2 mg/ml in 1X PBS with 0.1 mg/ml BSA (US sourced), 0.05% sodium azide | 20 ug |
| V8970SAF-100UG | 1 mg/ml in 1X PBS; BSA free, sodium azide free | 100 ug |

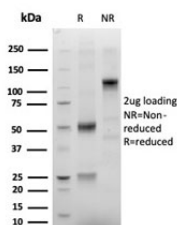
Recombinant **RABBIT MONOCLONAL**

[Bulk quote request](#)

| | |
|--------------------|---|
| Availability | 1-3 business days |
| Species Reactivity | Human |
| Format | Purified |
| Clonality | Recombinant Rabbit Monoclonal |
| Isotype | Rabbit IgG |
| Clone Name | ERG/22R |
| Purity | Protein A/G affinity |
| UniProt | P11308 |
| Localization | Nucleus, cytoplasm |
| Applications | Immunohistochemistry (FFPE) : 1-2ug/ml |
| Limitations | This recombinant ERG antibody is available for research use only. |



IHC staining of FFPE human prostate tissue (left) and negative control human brain tissue (right) with recombinant ERG antibody (clone ERG/22R) at 1ug/ml. HIER: boil tissue sections in pH 9 10mM Tris with 1mM EDTA for 20 min and allow to cool before testing.



SDS-PAGE analysis of purified, BSA-free recombinant ERG antibody (clone ERG/22R) as confirmation of integrity and purity.

Description

ERG (ETS-related gene) is a proto-oncogene, a member of the ETS family of transcription factors. The ERG gene encodes for a nuclear protein, also called ERG, which is involved in hematopoietic and endothelial development. ERG remains constitutively expressed in endothelial cells in blood and lymphatic vessels, and in bone marrow stem cells. ERG is expressed in virtually all endothelial neoplasms including hemangioendothelioma, angiosarcoma and Kaposi sarcoma. ERG is overexpressed secondary to gene rearrangement in cases of prostate adenocarcinoma, gastrointestinal stromal tumor, synovial sarcoma, meningioma, epithelioid sarcoma, malignant rhabdoid tumor, acute myeloid leukemia and blastic extramedullary myeloid tumor, and rarely Ewing sarcoma / primitive peripheral neuroectodermal tumor, chondrosarcoma, osteosarcoma, and rhabdomyosarcoma. For the identification of endothelial differentiation ERG seems more sensitive and specific than any other marker. Moreover, the interpretation is often easier due to the nuclear reaction, which also allows for double stains with cytoplasmic markers like podoplanin. Among carcinomas, ERG is highly specific for prostate, while the sensitivity is moderate.

Application Notes

Optimal dilution of the recombinant ERG antibody should be determined by the researcher.

Immunogen

A portion of amino acids between AA 450 and the C-terminus of human ERG protein was used as the immunogen for the recombinant EGR antibody.

Storage

Aliquot the recombinant ERG antibody and store frozen at -20oC or colder. Avoid repeated freeze-thaw cycles.