

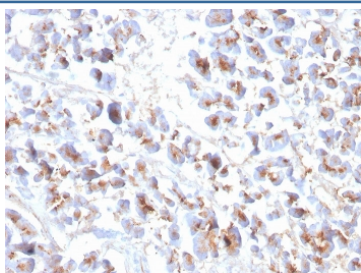
## Recombinant EPX Antibody / Eosinophil Peroxidase [clone EPX/3908R] (V8516)

Catalog No.	Formulation	Size
V8516-100UG	0.2 mg/ml in 1X PBS with 0.1 mg/ml BSA (US sourced) and 0.05% sodium azide	100 ug
V8516-20UG	0.2 mg/ml in 1X PBS with 0.1 mg/ml BSA (US sourced) and 0.05% sodium azide	20 ug
V8516SAF-100UG	1 mg/ml in 1X PBS; BSA free, sodium azide free	100 ug

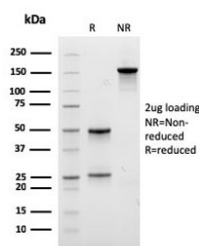
Recombinant **RABBIT MONOCLONAL**

[Bulk quote request](#)

<b>Availability</b>	1-3 business days
<b>Species Reactivity</b>	Human
<b>Format</b>	Purified
<b>Clonality</b>	Recombinant Rabbit Monoclonal
<b>Isotype</b>	Rabbit IgG
<b>Clone Name</b>	EPX/3908R
<b>Purity</b>	Protein A affinity chromatography
<b>UniProt</b>	P11678
<b>Localization</b>	Cytoplasmic
<b>Applications</b>	Flow Cytometry : 0.5-1ug/million cells Immunofluorescence : 0.5-1ug/ml Immunohistochemistry (FFPE) : 1-2ug/ml for 30 minutes at RT
<b>Limitations</b>	This recombinant EPX antibody is available for research use only.



IHC staining of FFPE human pancreas with recombinant EPX antibody. HIER: boil tissue sections in pH 9 10mM Tris with 1mM EDTA for 20 min and allow to cool before testing.



SDS-PAGE analysis of purified, BSA-free recombinant EPX antibody as confirmation of integrity and purity.

## Description

Peripheral blood granulocytes are classified into neutrophils, basophils and eosinophils according to the staining characteristics of their cytoplasmic granules. Granule proteins are released by physiologic and pharmacologic stimuli and play important roles in both normal and pathological host immune responses. Eosinophil major basic protein and eosinophil peroxidase (EPX) are granule proteins specific to the eosinophil. AHE-1 recognizes human EPX, a granule protein specific to eosinophils. It does not cross-react with eosinophil major basic protein, elastase, cathepsin G, esterase N, thrombin, plasmin, kallikrein, lactoferrin, or transferrin. This MAb stains eosinophils only and does not stain other peripheral blood cells, including platelets, neutrophils, monocytes, lymphocytes or red blood cells. Human EPX gene product can form a tetramer of two light chains and two heavy chains. Other peroxidase family members include myeloperoxidase (MPO), lactoperoxidase (LPO), and thyroid peroxidase (TPO).

## Application Notes

Optimal dilution of the recombinant EPX antibody should be determined by the researcher.

## Immunogen

Human eosinophils from a patient with hypereosinophilic syndrome were used as the immunogen for the EPX antibody.

## Storage

Store the recombinant EPX antibody at 2-8°C (with azide) or aliquot and store at -20°C or colder (without azide).