

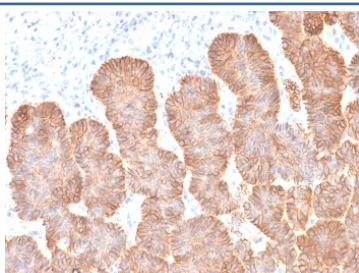
## Recombinant EpCAM Antibody / Extracellular domain [clone rEGP40/1372] (V3570)

Catalog No.	Formulation	Size
V3570-100UG	0.2 mg/ml in 1X PBS with 0.1 mg/ml BSA (US sourced) and 0.05% sodium azide	100 ug
V3570-20UG	0.2 mg/ml in 1X PBS with 0.1 mg/ml BSA (US sourced) and 0.05% sodium azide	20 ug
V3570SAF-100UG	1 mg/ml in 1X PBS; BSA free, sodium azide free	100 ug
V3570IHC-7ML	Prediluted in 1X PBS with 0.1 mg/ml BSA (US sourced) and 0.05% sodium azide; *For IHC use only*	7 ml

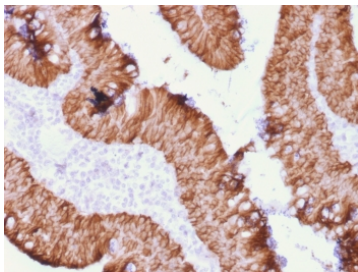
### Recombinant MOUSE MONOCLONAL

[Bulk quote request](#)

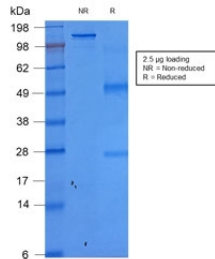
Availability	1-3 business days
Species Reactivity	Human, Dog, Cat
Format	Purified
Clonality	Recombinant Mouse Monoclonal
Isotype	Mouse IgG1, kappa
Clone Name	rEGP40/1372
Purity	Protein G affinity chromatography
UniProt	P16422
Localization	Cell surface, cytoplasmic
Applications	Western Blot : 0.5-1ug/ml Immunohistochemistry (FFPE) : 0.5-1ug/ml for 30 min at RT
Limitations	This recombinant EpCAM antibody is available for research use only.



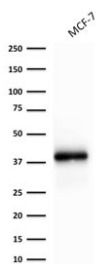
IHC testing of FFPE human skin with recombinant EpCAM antibody (clone rEGP40/1372). Required HIER: boil tissue sections in 10mM citrate buffer, pH 6, for 10-20 min followed by cooling at RT for 20 min.



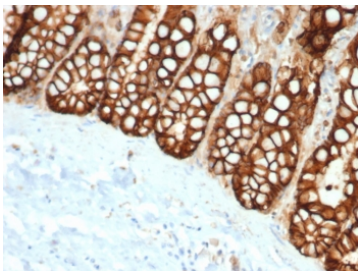
IHC testing of FFPE human rectal mass tissue with recombinant EpCAM antibody (clone rEGP40/1372). Required HIER: boil tissue sections in 10mM citrate buffer, pH 6, for 10-20 min followed by cooling at RT for 20 min.



SDS-PAGE analysis of purified, BSA-free recombinant EpCAM antibody (clone rEGP40/1372) as confirmation of integrity and purity.

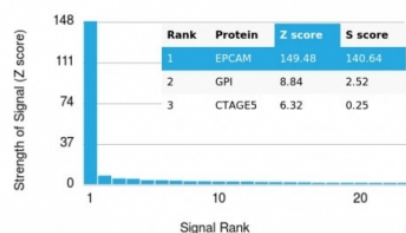


Western blot testing of human MCF-7 cell lysate with recombinant EpCAM antibody (clone rEGP40/1372). Expected molecular weight: ~35 kDa (unmodified), 40-43 kDa (glycosylated).



IHC staining of FFPE cat small intestine with recombinant EpCAM antibody (clone rEGP40/1372). HIER: boil tissue sections in pH 9 10mM Tris with 1mM EDTA for 20 min and allow to cool before testing.

Human Protein Microarray Specificity Validation



Analysis of HuProt(TM) microarray containing more than 19,000 full-length human proteins using recombinant EpCAM antibody (clone rEGP40/1372). These results demonstrate the foremost specificity of the rEGP40/1372 mAb. Z- and S- score: The Z-score represents the strength of a signal that an antibody (in combination with a fluorescently-tagged anti-IgG secondary Ab) produces when binding to a particular protein on the HuProt(TM) array. Z-scores are described in units of standard deviations (SD&#39;s) above the mean value of all signals generated on that array. If the targets on the HuProt(TM) are arranged in descending order of the Z-score, the S-score is the difference (also in units of SD&#39;s) between the Z-scores. The S-score therefore represents the relative target specificity of an Ab to its intended target.

## Description

EGP40 is a 40-43kDa transmembrane epithelial glycoprotein, also identified as epithelial specific antigen (ESA), or epithelial cellular adhesion molecule (Ep-CAM). It is expressed on baso-lateral cell surface in most simple epithelia and a vast majority of carcinomas with the exception of adult squamous epithelium, hepatocytes and gastric epithelial cells. This antibody has been used to distinguish adenocarcinoma from pleural mesothelioma and hepatocellular carcinoma. This antibody is also useful in distinguishing serous carcinomas of the ovary from mesothelioma.

## Application Notes

Optimal dilution of the recombinant EpCAM antibody should be determined by the researcher.

1. The prediluted format is supplied in a dropper bottle and is optimized for use in IHC. After epitope retrieval step (if required), drip mAb solution onto the tissue section and incubate at RT for 30 min.

## Immunogen

A portion of amino acids 100-224 (extracellular domain) was used as the immunogen for the recombinant EpCAM antibody.

## Storage

Store the recombinant EpCAM antibody at 2-8oC (with azide) or aliquot and store at -20oC or colder (without azide).