

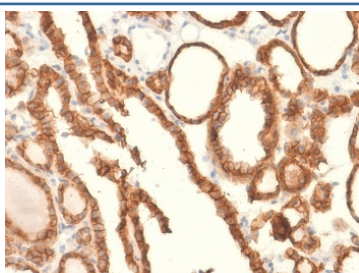
Recombinant EpCAM Antibody / Extracellular domain [clone EGP40/2041R] (V3559)

Catalog No.	Formulation	Size
V3559-100UG	0.2 mg/ml in 1X PBS with 0.1 mg/ml BSA (US sourced) and 0.05% sodium azide	100 ug
V3559-20UG	0.2 mg/ml in 1X PBS with 0.1 mg/ml BSA (US sourced) and 0.05% sodium azide	20 ug
V3559SAF-100UG	1 mg/ml in 1X PBS; BSA free, sodium azide free	100 ug
V3559IHC-7ML	Prediluted in 1X PBS with 0.1 mg/ml BSA (US sourced) and 0.05% sodium azide; *For IHC use only*	7 ml

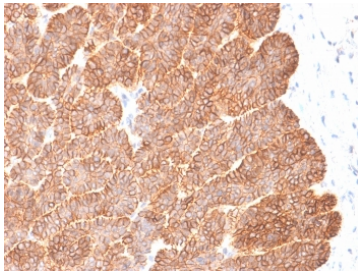
Recombinant **RABBIT MONOCLONAL**

[Bulk quote request](#)

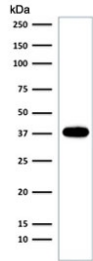
Availability	1-3 business days
Species Reactivity	Human, Dog, Cat
Format	Purified
Clonality	Recombinant Rabbit Monoclonal
Isotype	Rabbit IgG, kappa
Clone Name	EGP40/2041R
Purity	Protein A affinity chromatography
UniProt	P16422
Localization	Cell surface, cytoplasmic
Applications	Western Blot : 1-2ug/ml Immunohistochemistry (FFPE) : 1-2ug/ml for 30 min at RT
Limitations	This recombinant EpCAM antibody is available for research use only.



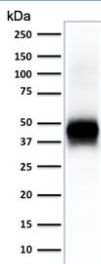
IHC testing of FFPE human thyroid carcinoma and recombinant EpCAM antibody (clone EGP40/2041R). Required HIER: boil tissue sections in pH 9 10mM Tris with 1mM EDTA for 10-20 min followed by cooling at RT for 20 min.



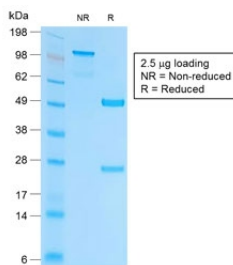
IHC testing of FFPE human basal cell carcinoma and recombinant EpCAM antibody (clone EGP40/2041R). Required HIER: boil tissue sections in pH 9 10mM Tris with 1mM EDTA for 10-20 min followed by cooling at RT for 20 min.



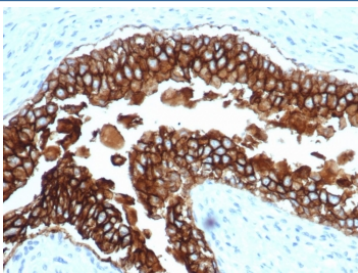
Western blot testing of human MCF7 cell lysate with recombinant EpCAM antibody (clone EGP40/2041R). Expected molecular weight: ~35 kDa (unmodified), 40-43 kDa (glycosylated).



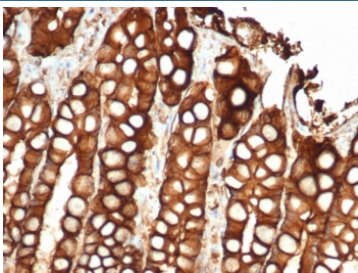
Western blot testing of human lung lysate with EpCAM antibody (clone EGP40/2041R). Expected molecular weight: ~35 kDa (unmodified), 40-43 kDa (glycosylated).



SDS-PAGE analysis of purified, BSA-free recombinant EpCAM antibody (clone EGP40/2041R) as confirmation of integrity and purity.



IHC testing of FFPE dog bladder and recombinant EpCAM antibody (clone EGP40/2041R). HIER: steam sections in pH9 EDTA for 10-20 min.



IHC testing of FFPE cat small intestine and recombinant EpCAM antibody (clone EGP40/2041R). HIER: steam sections in pH9 EDTA for 10-20 min.

Description

EpCAM is frequently upregulated in carcinomas but is not expressed in cancers of non-epithelial origin. EpCAM expression is not limited to human colon carcinomas; in fact, EpCAM is expressed in a variety of human epithelial tissues, carcinomas, and progenitor and stem cells. [Wiki]

Application Notes

Titering of the recombinant EpCAM antibody may be required for optimal performance.

1. The prediluted format is supplied in a dropper bottle and is optimized for use in IHC. After epitope retrieval step (if required), drip mAb solution onto the tissue section and incubate at RT for 30 min.

Immunogen

A portion of amino acids 100-224 (extracellular domain) was used as the immunogen for the recombinant EpCAM antibody.

Storage

Store the recombinant EpCAM antibody at 2-8oC (with azide) or aliquot and store at -20oC or colder (without azide).