

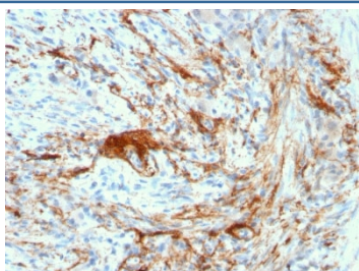
Recombinant Elastin Antibody [clone ELN/3131R] (V7406)

Catalog No.	Formulation	Size
V7406-100UG	0.2 mg/ml in 1X PBS with 0.1 mg/ml BSA (US sourced) and 0.05% sodium azide	100 ug
V7406-20UG	0.2 mg/ml in 1X PBS with 0.1 mg/ml BSA (US sourced) and 0.05% sodium azide	20 ug
V7406SAF-100UG	1 mg/ml in 1X PBS; BSA free, sodium azide free	100 ug
V7406IHC-7ML	Prediluted in 1X PBS with 0.1 mg/ml BSA (US sourced) and 0.05% sodium azide; *For IHC use only*	7 ml

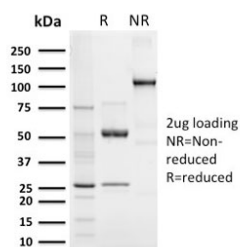
Recombinant **RABBIT MONOCLONAL**

[Bulk quote request](#)

Availability	1-3 business days
Species Reactivity	Human
Format	Purified
Clonality	Recombinant Rabbit Monoclonal
Isotype	Rabbit IgG, kappa
Clone Name	ELN/3131R
Purity	Protein A affinity chromatography
UniProt	P15502
Localization	Secreted
Applications	Immunohistochemistry (FFPE) : 1-2ug/ml for 30 min at RT
Limitations	This recombinant Elastin antibody is available for research use only.



IHC testing of FFPE human small intestine with recombinant Elastin antibody (clone ELN/3131R). Required HIER: boiling tissue sections in 10mM citrate buffer, pH 6, for 10-20 min and allow to cool prior to staining.



SDS-PAGE analysis of purified, BSA-free recombinant Elastin antibody (clone ELN/3131R) as confirmation of integrity and purity.

Description

Elastin is a polymeric protein and is the main component of the extracellular matrix of arteries. It is synthesized and secreted as a soluble, single-chain protein (tropoelastin), which undergoes a number of post-translational modifications prior to its organization into an elastic fiber in the extracellular space. Elastin performs a regulatory function during arterial development by controlling proliferation of smooth muscle and stabilizing arterial structure. It imparts elasticity to the connective tissue. During aging, the elasticity of connective tissue is reduced because of the cross-linking of collagenous fibers with elastin. The abnormal accumulation of elastic tissue in blood vessels is found in atherosclerosis and hypertension.

Application Notes

Titration of the recombinant Elastin antibody may be required for optimal performance.

1. The prediluted format is supplied in a dropper bottle and is optimized for use in IHC. After epitope retrieval step (if required), drip mAb solution onto the tissue section and incubate at RT for 30 min.

Immunogen

Recombinant full length human protein was used as the immunogen for the recombinant Elastin antibody.

Storage

Store the recombinant Elastin antibody at 2-8°C (with azide) or aliquot and store at -20°C or colder (without azide).