

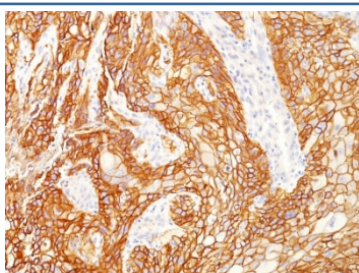
## Recombinant EGFRvIII Antibody / EGF Receptor Variant III [clone GFR/2600R] (V3980)

Catalog No.	Formulation	Size
V3980-100UG	0.2 mg/ml in 1X PBS with 0.1 mg/ml BSA (US sourced) and 0.05% sodium azide	100 ug
V3980-20UG	0.2 mg/ml in 1X PBS with 0.1 mg/ml BSA (US sourced) and 0.05% sodium azide	20 ug
V3980SAF-100UG	1 mg/ml in 1X PBS; BSA free, sodium azide free	100 ug
V3980IHC-7ML	Prediluted in 1X PBS with 0.1 mg/ml BSA (US sourced) and 0.05% sodium azide; *For IHC use only*	7 ml

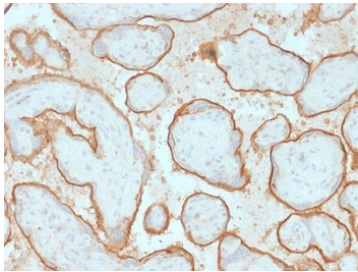
Recombinant **RABBIT MONOCLONAL**

[Bulk quote request](#)

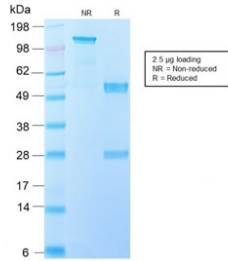
Availability	1-3 business days
Species Reactivity	Human. Other species not tested.
Format	Purified
Clonality	Recombinant Rabbit Monoclonal
Isotype	Rabbit IgG, kappa
Clone Name	GFR/2600R
Purity	Protein A affinity chromatography
UniProt	P00533
Localization	Cell surface
Applications	Immunohistochemistry (FFPE) : 1-2ug/ml for 30 min at RT Prediluted IHC Only Format : incubate for 30 min at RT (1)
Limitations	This recombinant EGFRvIII antibody is available for research use only.



IHC testing of FFPE human lung squamous cell carcinoma with recombinant EGFRvIII antibody (clone GFR/2600R). Required HIER: boiling tissue sections in pH 9 10mM Tris with 1mM EDTA for 10-20 min and allow to cool prior to testing.



IHC testing of FFPE human placenta with recombinant EGFRvIII antibody (clone GFR/2600R). Required HIER: boiling tissue sections in pH 9 10mM Tris with 1mM EDTA for 10-20 min and allow to cool prior to testing.



SDS-PAGE analysis of purified, BSA-free recombinant EGFRvIII antibody (clone GFR/2600R) as confirmation of integrity and purity.

## Description

EGFR is type I receptor tyrosine kinase with sequence homology to erbB-1, -2, -3 -4 or HER-1, -2, -3 -4. It binds to Epidermal Growth Factor (EGF), Transforming Growth Factor- $\alpha$  (TGF- $\alpha$ ), Heparin-binding EGF (HB-EGF), amphiregulin, betacellulin and epiregulin. EGFR is overexpressed in tumors of breast, brain, bladder, lung, gastric, head & neck, esophagus, cervix, vulva, ovary, and endometrium. It is predominantly present in squamous cell carcinomas.

## Application Notes

Titering of the recombinant EGFRvIII antibody may be required for optimal performance.

1. The prediluted format is supplied in a dropper bottle and is optimized for use in IHC. After epitope retrieval step (if required), drip mAb solution onto the tissue section and incubate at RT for 30 min.

## Immunogen

Amino acids LEEKKGNVVT DHC were used as the immunogen for the recombinant EGFRvIII antibody. This is the predicted sequence of the exon 2-7 delete fusion region.

## Storage

Store the recombinant EGFRvIII antibody at 2-8°C (with azide) or aliquot and store at -20°C or colder (without azide).