

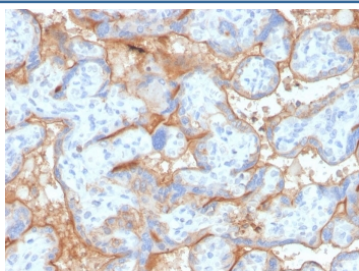
## Recombinant EGFR Antibody [clone GFR/4563R] (V8745)

Catalog No.	Formulation	Size
V8745-100UG	0.2 mg/ml in 1X PBS with 0.1 mg/ml BSA (US sourced) and 0.05% sodium azide	100 ug
V8745-20UG	0.2 mg/ml in 1X PBS with 0.1 mg/ml BSA (US sourced) and 0.05% sodium azide	20 ug
V8745SAF-100UG	1 mg/ml in 1X PBS; BSA free, sodium azide free	100 ug

Recombinant **RABBIT MONOCLONAL**

[Bulk quote request](#)

Availability	1-3 business days
Species Reactivity	Human
Format	Purified
Clonality	Recombinant Rabbit Monoclonal
Isotype	Rabbit IgG
Clone Name	GFR/4563R
Purity	Protein A affinity chromatography
UniProt	P00533
Localization	Cytomembrane
Applications	Immunohistochemistry (FFPE) : 1-2ug/ml for 30 minutes at RT
Limitations	This recombinant EGFR antibody is available for research use only.



IHC staining of FFPE human placenta with recombinant EGFR antibody (clone GFR/4563R). HIER: boil tissue sections in pH 9 10mM Tris with 1mM EDTA for 20 min and allow to cool before testing.

## Description

This MAb recognizes a protein of 170kDa, identified as EGFR. EGFR is type I receptor tyrosine kinase with sequence homology to erbB-1, -2, -3 -4 or HER-1, -2, -3 -4. It binds to Epidermal Growth Factor (EGF), Transforming Growth Factor-

a (TGF- $\alpha$ ), Heparin-binding EGF (HB-EGF), amphiregulin, betacellulin and epiregulin. EGFR is overexpressed in tumors of breast, brain, bladder, lung, gastric, head neck, esophagus, cervix, vulva, ovary, and endometrium. It is predominantly present in squamous cell carcinomas.

## Application Notes

Optimal dilution of the recombinant EGFR antibody should be determined by the researcher.

## Immunogen

A portion of amino acids 1050-1150 from the human protein was used as the immunogen for the recombinant EGFR antibody.

## Storage

Store the recombinant EGFR antibody at 2-8°C (with azide) or aliquot and store at -20°C or colder (without azide).