

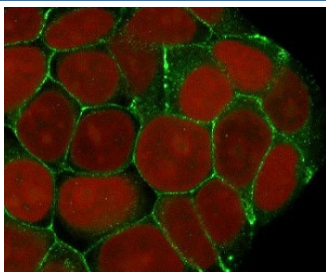
## Recombinant E-Cadherin Antibody / Rabbit Monoclonal [clone ECD1-3R] (V3702)

Catalog No.	Formulation	Size
V3702-100UG	0.2 mg/ml in 1X PBS with 0.1 mg/ml BSA (US sourced) and 0.05% sodium azide	100 ug
V3702-20UG	0.2 mg/ml in 1X PBS with 0.1 mg/ml BSA (US sourced) and 0.05% sodium azide	20 ug
V3702SAF-100UG	1 mg/ml in 1X PBS; BSA free, sodium azide free	100 ug
V3702IHC-7ML	Prediluted in 1X PBS with 0.1 mg/ml BSA (US sourced) and 0.05% sodium azide; *For IHC use only*	7 ml

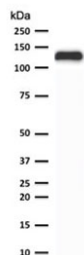
Recombinant RABBIT MONOCLONAL

[Bulk quote request](#)

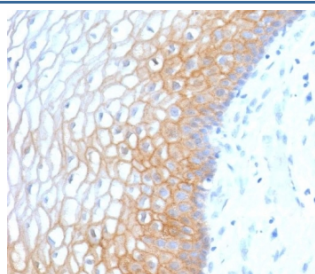
Availability	1-3 business days
Species Reactivity	Human
Format	Purified
Clonality	Recombinant Rabbit Monoclonal
Isotype	Rabbit IgG, kappa
Clone Name	ECD1-3R
Purity	Protein A affinity chromatography
UniProt	P12830
Localization	Cytoplasmic, membranous
Applications	Western Blot : 1-2ug/ml Immunofluorescence : 1-2ug/ml Flow Cytometry : 1-2ug/10 <sup>6</sup> cells Immunohistochemistry (FFPE) : 1-2ug/ml for 30 min at RT Prediluted IHC Only Format : incubate for 30 min at RT (1)
Limitations	This recombinant E-Cadherin antibody is available for research use only.



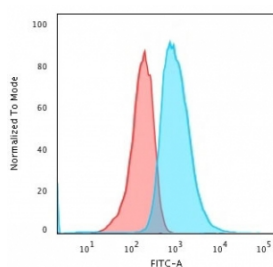
Immunofluorescent staining of human MCF7 cells with recombinant E-Cadherin antibody (clone ECD1-3R, green) and Reddot nuclear stain (red).



Western blot testing of human MCF-7 cell lysate with recombinant E-Cadherin antibody (clone ECD1-3R). Expected molecular weight: 135 kDa (precursor), 80-120 kDa (mature, depending on glycosylation level).



Formalin-fixed, paraffin-embedded human cervix stained with recombinant E-Cadherin antibody (clone ECD1-3R). Required HIER: boil tissue sections in 10mM citrate buffer, pH6, for 10-20 min followed by cooling at RT for 20 min.



Flow cytometry testing of human MCF7 cells with recombinant E-Cadherin antibody (clone ECD1-3R); Red=isotype control, Blue= recombinant E-Cadherin antibody.

## Description

Cadherins behave as both receptors and ligands for other molecules. During development, their behavior assists in properly positioning cells: they are responsible for the separation of the different tissue layers, and for cellular migration. In the very early stages of development, E-cadherin (epithelial cadherin) is most greatly expressed. The E-cadherin-catenin complex plays a key role in cellular adhesion; loss of this function has been associated with greater tumour metastasis. [Wiki]

## Application Notes

The stated application concentrations are suggested starting points. Titration of the recombinant E-Cadherin antibody may be required due to differences in protocols and secondary/substrate sensitivity.

1. The prediluted format is supplied in a dropper bottle and is optimized for use in IHC. After epitope retrieval step (if required), drip mAb solution onto the tissue section and incubate at RT for 30 min.

## Immunogen

Recombinant human protein was used as the immunogen for the recombinant E-Cadherin antibody.

## Storage

Store the recombinant E-Cadherin antibody at 2-8oC (with azide) or aliquot and store at -20oC or colder (without azide).