

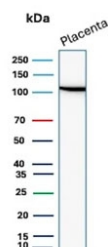
Recombinant E-Cadherin Antibody / CDH1 [clone rCDH1/9615] (V5472)

Catalog No.	Formulation	Size
V5472-100UG	0.2 mg/ml in 1X PBS with 0.1 mg/ml BSA (US sourced), 0.05% sodium azide	100 ug
V5472-20UG	0.2 mg/ml in 1X PBS with 0.1 mg/ml BSA (US sourced), 0.05% sodium azide	20 ug
V5472SAF-100UG	1 mg/ml in 1X PBS; BSA free, sodium azide free	100 ug

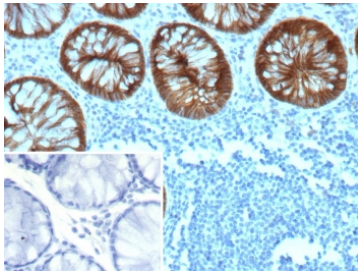
Recombinant **MOUSE MONOCLONAL**

[Bulk quote request](#)

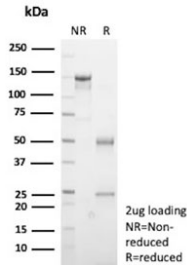
Availability	1-3 business days
Species Reactivity	Human
Format	Purified
Clonality	Recombinant Mouse Monoclonal
Isotype	Mouse IgG2b, kappa
Clone Name	rCDH1/9615
Purity	Protein A/G affinity
UniProt	P12830
Localization	Cell membrane
Applications	Immunohistochemistry (FFPE) : 1-2ug/ml Western Blot : 2-4ug/ml
Limitations	This recombinant E-Cadherin antibody is available for research use only.



Western blot testing of human placental tissue lysate with recombinant E-Cadherin antibody. Expected molecular weight: 135 kDa (precursor), 80-120 kDa (mature, depending on glycosylation level).



IHC staining of FFPE human colon tissue with recombinant E-Cadherin antibody (clone rCDH1/9615). Inset: PBS used in place of primary Ab (secondary Ab negative control). HIER: boil tissue sections in pH 9 10mM Tris with 1mM EDTA for 20 min and allow to cool before testing.



SDS-PAGE analysis of purified, BSA-free recombinant E-Cadherin antibody (clone rCDH1/9615) as confirmation of integrity and purity.

Description

E-cadherin is a transmembrane, calcium dependent cell adhesion protein that mediates cell to cell adhesion and maintains structural and functional integrity of epithelial tissues. It also has pivotal barrier functions and maintains the polarity of epithelial cells. Reduced or aberrant E-cadherin expression breaks cell to cell contacts, and thus, cells acquire the ability to migrate. In normal tissues, immunostaining of E-cadherin is localized to the membrane of epithelial cells, consistent with its role in cell adhesion. And in tumor tissues, E-cadherin stains positively in glandular epithelium as well as adenocarcinomas of the lung, gastrointestinal tract, and ovary. It has also been shown to be positive in some thyroid carcinomas. A combination of E-cadherin and p120 catenin may help distinguish ductal carcinoma of the breast from lobular carcinoma. And also, several studies have reported that reduced E-cadherin expression is correlated with poor prognosis in several types of carcinomas.

Application Notes

Optimal dilution of the recombinant E-Cadherin antibody should be determined by the researcher.

Immunogen

Recombinant full-length human Cadherin 1 protein was used as the immunogen for the recombinant E-Cadherin antibody.

Storage

Aliquot the recombinant E-Cadherin antibody and store frozen at -20°C or colder. Avoid repeated freeze-thaw cycles.