

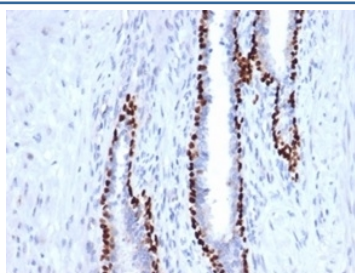
Recombinant deltaNp63 Antibody / p40 [clone P40/4396R] (V9359)

Catalog No.	Formulation	Size
V9359-100UG	0.2 mg/ml in 1X PBS with 0.1 mg/ml BSA (US sourced), 0.05% sodium azide	100 ug
V9359-20UG	0.2 mg/ml in 1X PBS with 0.1 mg/ml BSA (US sourced), 0.05% sodium azide	20 ug
V9359SAF-100UG	1 mg/ml in 1X PBS; BSA free, sodium azide free	100 ug

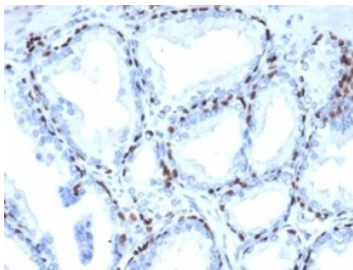
Recombinant **RABBIT MONOCLONAL**

[Bulk quote request](#)

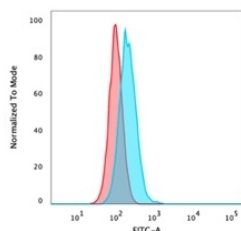
Availability	1-3 business days
Species Reactivity	Human
Format	Purified
Clonality	Recombinant Rabbit Monoclonal
Isotype	Rabbit IgG, kappa
Clone Name	P40/4396R
Purity	Protein A affinity
UniProt	Q9H3D4
Localization	Nucleus
Applications	ELISA (order BSA-free Format For Coating) : Flow Cytometry : 1-2ug/million cells Immunohistochemistry (FFPE) : 1-2ug/ml
Limitations	This recombinant deltaNp63 antibody is available for research use only.



IHC staining of FFPE human prostate tissue with recombinant deltaNp63 antibody (clone P40/4396R). HIER: boil tissue sections in pH 9 10mM Tris with 1mM EDTA for 20 min and allow to cool before testing.



IHC staining of FFPE human prostate tissue with recombinant deltaNp63 antibody (clone P40/4396R). HIER: boil tissue sections in pH 9 10mM Tris with 1mM EDTA for 20 min and allow to cool before testing.



FACS staining of PFA-fixed human HeLa cells with recombinant deltaNp63 antibody (blue, clone P40/4396R) and isotype control (red).

Description

p40, the deltaN form of p63, is thought to function as a stem cell factor, responsible for maintaining cells in an uncommitted state with regenerative potential a role that may be recapitulated in tumors derived from these cells. p40 is normally expressed in the basal or progenitor cell layer of stratified epithelia (eg. squamous, urothelial, bronchial), basal cells of some glandular epithelia (eg. prostate), as well as myoepithelial cells of breast and salivary glands, trophoblasts and thymic epithelial cells. In tumor tissues, p40 expression is specific for squamous cell carcinoma. p40 is equivalent to p63 in sensitivity for lung squamous cell carcinoma, but it is markedly superior to p63 in specificity, which eliminates a potential pitfall of misinterpreting a p63-positive adenocarcinoma or unsuspected lymphoma as squamous cell carcinoma. p40 appears to be a more reliable marker for squamous cell carcinoma.

Application Notes

Optimal dilution of the recombinant deltaNp63 antibody should be determined by the researcher.

Immunogen

A portion of amino acids 1-100 was used as the immunogen for the recombinant deltaNp63 antibody.

Storage

Aliquot the recombinant deltaNp63 antibody and store frozen at -20oC or colder. Avoid repeated freeze-thaw cycles.