

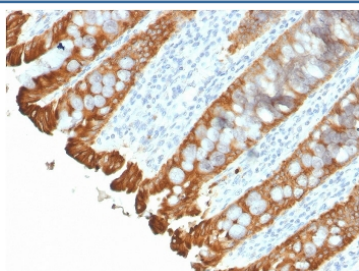
## Recombinant Cytokeratin 8/18 Antibody [clone KRT8.18/2297R] (V8405)

| Catalog No.    | Formulation  | Size   |
|----------------|--|--------|
| V8405-100UG    | 0.2 mg/ml in 1X PBS with 0.1 mg/ml BSA (US sourced) and 0.05% sodium azide | 100 ug |
| V8405-20UG     | 0.2 mg/ml in 1X PBS with 0.1 mg/ml BSA (US sourced) and 0.05% sodium azide | 20 ug  |
| V8405SAF-100UG | 1 mg/ml in 1X PBS; BSA free, sodium azide free                             | 100 ug |

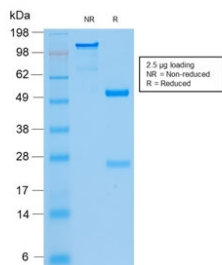
Recombinant **RABBIT MONOCLONAL**

[Bulk quote request](#)

|                           |  |
|---------------------------|--|
| <b>Availability</b>       | 1-3 business days  |
| <b>Species Reactivity</b> | Human  |
| <b>Format</b>             | Purified   |
| <b>Clonality</b>          | Recombinant Rabbit Monoclonal  |
| <b>Isotype</b>            | Rabbit IgG, kappa  |
| <b>Clone Name</b>         | KRT8.18/2297R  |
| <b>Purity</b>             | Protein A affinity chromatography  |
| <b>UniProt</b>            | P05787; P05783   |
| <b>Localization</b>       | Cytoplasmic  |
| <b>Applications</b>       | Immunohistochemistry (FFPE) : 1-2ug/ml for 30 min at RT                        |
| <b>Limitations</b>        | This recombinant Cytokeratin 8/18 antibody is available for research use only. |



IHC staining of FFPE human colon with recombinant Cytokeratin 8/18 antibody (clone KRT8.18/2297R). HIER: boil tissue sections in pH 9 10mM Tris with 1mM EDTA for 20 min and allow to cool before testing.



SDS-PAGE analysis of purified, BSA-free recombinant Cytokeratin 8/18 antibody (clone KRT8.18/2297R) as confirmation of integrity and purity.

## Description

Cytokeratin 8 (CK8) belongs to the type II (or B or basic) subfamily of high molecular weight cytokeratins and exists in combination with cytokeratin 18 (CK18). This MAb cocktail recognizes all simple epithelia including glandular epithelium, for example thyroid, female breast, gastrointestinal tract, respiratory tract, and urogenital tract including transitional epithelium. All adenocarcinomas and most squamous carcinomas are positive but keratinizing squamous carcinomas are usually negative. This antibody is useful in demonstrating the presence of Paget cells; there is very little keratin 18 in the normal epidermis so only Paget cells are stained. Immunohistochemical staining with this MAb is indistinguishable from that obtained with monoclonal antibody 5D3.

## Application Notes

Optimal dilution of the recombinant Cytokeratin 8/18 antibody should be determined by the researcher.

## Immunogen

Recombinant full-length human KRT8/18 protein was used as the immunogen for the recombinant Cytokeratin 8/18 antibody.

## Storage

Store the recombinant Cytokeratin 8/18 antibody at 2-8°C (with azide) or aliquot and store at -20°C or colder (without azide).