

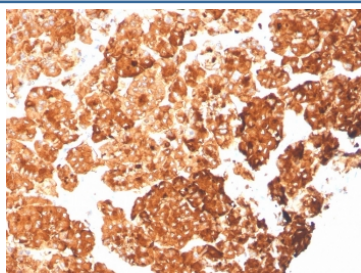
## Recombinant Cytokeratin 6A Antibody [clone rKRT6A/2100] (V7912)

Catalog No.	Formulation	Size
V7912-100UG	0.2 mg/ml in 1X PBS with 0.1 mg/ml BSA (US sourced) and 0.05% sodium azide	100 ug
V7912-20UG	0.2 mg/ml in 1X PBS with 0.1 mg/ml BSA (US sourced) and 0.05% sodium azide	20 ug
V7912SAF-100UG	1 mg/ml in 1X PBS; BSA free, sodium azide free	100 ug

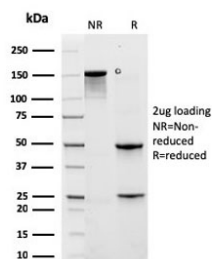
Recombinant **MOUSE MONOCLONAL**

[Bulk quote request](#)

<b>Availability</b>	1-3 business days
<b>Species Reactivity</b>	Human
<b>Format</b>	Purified
<b>Clonality</b>	Recombinant Mouse Monoclonal
<b>Isotype</b>	Mouse IgG1, kappa
<b>Clone Name</b>	rKRT6A/2100
<b>Purity</b>	Protein G affinity chromatography
<b>UniProt</b>	P02538
<b>Localization</b>	Cytoplasmic
<b>Applications</b>	Immunohistochemistry (FFPE) : 1-2ug/ml
<b>Limitations</b>	This recombinant Cytokeratin 6A antibody is available for research use only.



IHC staining of FFPE human pancreas with recombinant Cytokeratin 6A antibody (clone rKRT6A/2100). HIER: boil tissue sections in pH 9 10mM Tris with 1mM EDTA for 20 min and allow to cool before testing.



SDS-PAGE analysis of purified, BSA-free recombinant Cytokeratin 6A antibody (clone rKRT6A/2100) as confirmation of integrity and purity.

## Description

This MAb recognizes a protein of 56kDa, identified as cytokeratin 6A (KRT6A). In humans, multiple isoforms of Cytokeratin 6 (6A-6F), encoded by several highly homologous genes, have distinct tissue expression patterns. Cytokeratin 6A is the dominant form in epithelial tissue. Cytokeratin 6 and 16 are expressed in keratinocytes, which are undergoing rapid turnover in the suprabasal region (also known as hyper-proliferation-related keratins). Cytokeratin 6 is found in hair follicles, suprabasal cells of a variety of internal stratified epithelia, in epidermis, in both normal and hyper-proliferative situations. Epidermal injury results in activation of keratinocytes, which express KRT6 and KRT16. KRT6 is strongly expressed in about 75% of head and neck squamous cell carcinomas.

## Application Notes

Optimal dilution of the recombinant Cytokeratin 6A antibody should be determined by the researcher.

## Immunogen

A recombinant full-length human Cytokeratin 6A protein was used as the immunogen for this recombinant Cytokeratin 6A antibody.

## Storage

Store the recombinant Cytokeratin 6A antibody at 2-8°C (with azide) or aliquot and store at -20°C or colder (without azide).